

Minotaur House, 3 Thunderer Walk, LONDON, SE18 6LH

£1,500 PCM

An Ultra Modern 1 bedroom apartment on the 4th Floor, situated within Royal Arsenal Riverside development. This impressive newly built property comprises 1 bedroom, 1 bathroom, open plan kitchen and reception room, with a spacious private balcony and high end furnishings throughout.

It boasts an onsite 24 hours Concierge with residents access to a gym, swimming pool, Sauna, Cinema. (AVAILABLE NOW)

The infamous Cross Rail is expected in 2019 which will offer faster journey time into the Canary Wharf, The City, West End and Heathrow airport.

Parking is not available.

- 24 hour Concierge

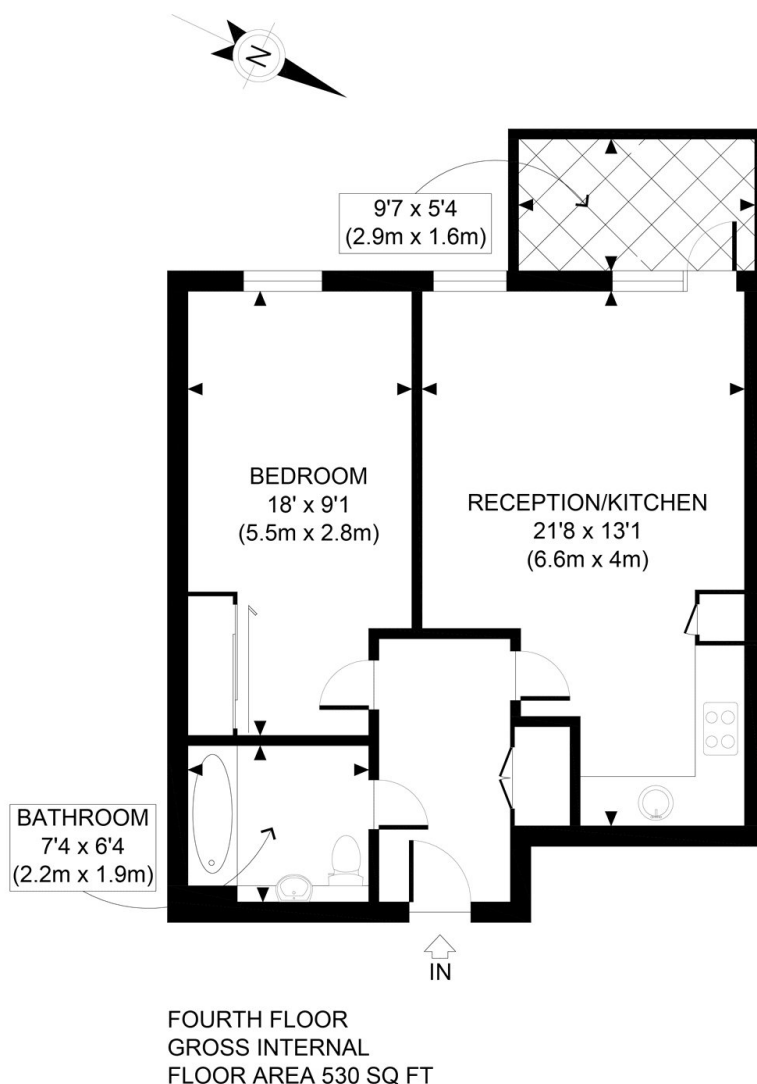
Viewing by appointment with 1st avenue.

Call: 020 8293 8600

1st avenue, 128 Metcalfe Court, West Parkside, London SE10 0EL
email: info@1stavenue.co.uk

Minotaur House, 3 Thunderer Walk, LONDON, SE18 6LH

£1,500 PCM



APPROX. GROSS INTERNAL FLOOR AREA 530 SQ FT / 49 SQM

Ref:

Copyright **photoplan** 

Disclaimer: Floor plan measurements are approximate and are for illustrative purposes only. While we do not doubt the floor plan accuracy and completeness, you or your advisors should conduct a careful, independent investigation of the property in respect of monetary valuation

Viewing by appointment with 1st avenue.

Call: 020 8293 8600

1st avenue, 128 Metcalfe Court, West Parkside, London SE10 0EL
email: info@1stavenue.co.uk