



SWIFT

ELMWOOD
MAGE



platformproperty
estate agency evolved



Elmwood Cottage, Four Elms Road, Edenbridge, Kent TN8 6AF
£775,000 - Freehold



PROPERTY DESCRIPTION

An immaculate four double bedroom detached house set within an exclusive development of four houses just off Four Elms Road TN8. Built approximately 17 years ago this striking property has been lovingly cared for by the current owner. The inviting entrance hallway has Karndeane wood effect flooring and give access to the cloakroom, generous sitting room, a dining room, a utility room and the open plan kitchen/breakfast room. The carpeted stairs lead to the wide, open landing where four great sized double bedrooms reside and a modern family bathroom. Both bedrooms one and two benefit from modern en-suite shower rooms. Externally and to the front, the property is accessed just off Four Elms Road and leads to the development of four detached houses. The driveway leads to a garage and side access gate. To the rear there is an attractive patio area that leads onto the level lawn which is adorned by shrub borders and a well established fruit tree. To the rear there is a garden shed ideal for storing garden tools. Viewings are highly recommended. Call us now for more information, we are ****Open 8am - 8pm 7 Days a Week****

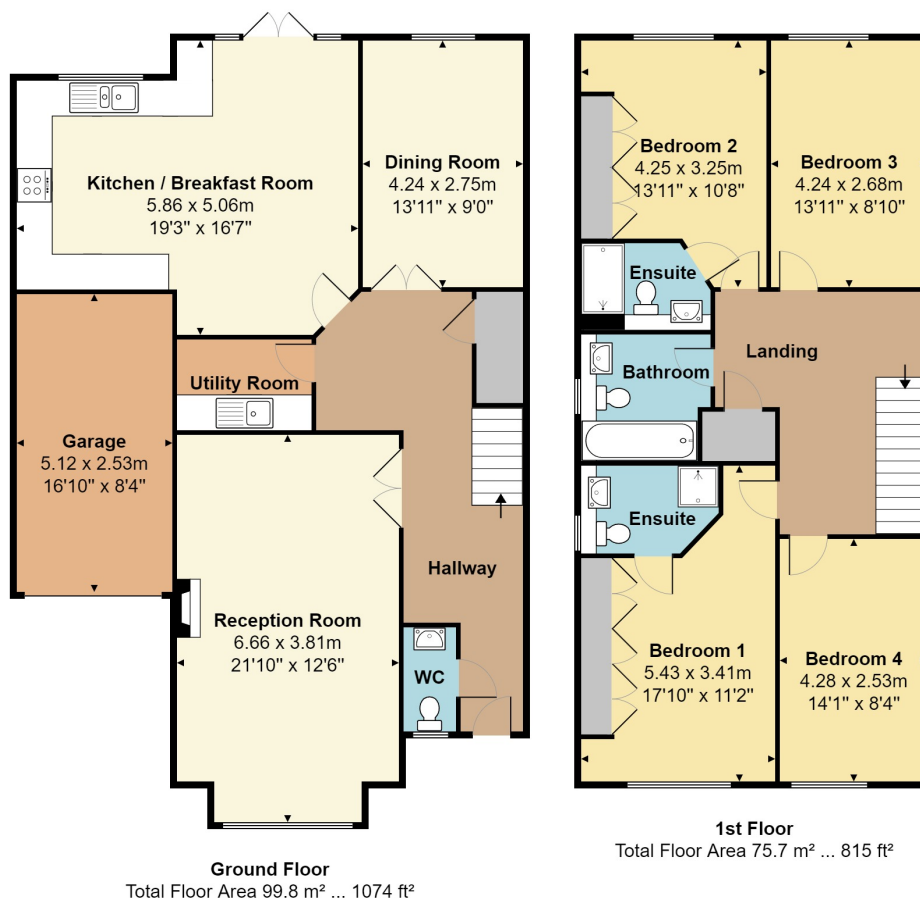
POINTS OF INTEREST

- DETACHED MODERN HOUSE
- FOUR DOUBLE BEDROOMS
- FAMILY BATHROOM, CLOAKROOM AND TWO ENSUITES
- PRIVATE DRIVEWAY, GARAGE AND ELECTRIC CHARGING POINTS
- SHORT DRIVE TO BOTH EDENBRIDGE STATIONS AND HIGH STREET
- SECLUDED GARDEN



Four Elms Road, Edenbridge, TN8

Total Floor Area: 175.5 m² ... 1889 ft²



Measurements are approximate, not to scale and for illustrative purposes only.
www.essentialpropertymarketing.com