



1 Knole Court, Knole Road, Bexhill-on-Sea,
East Sussex, TN40 1LN

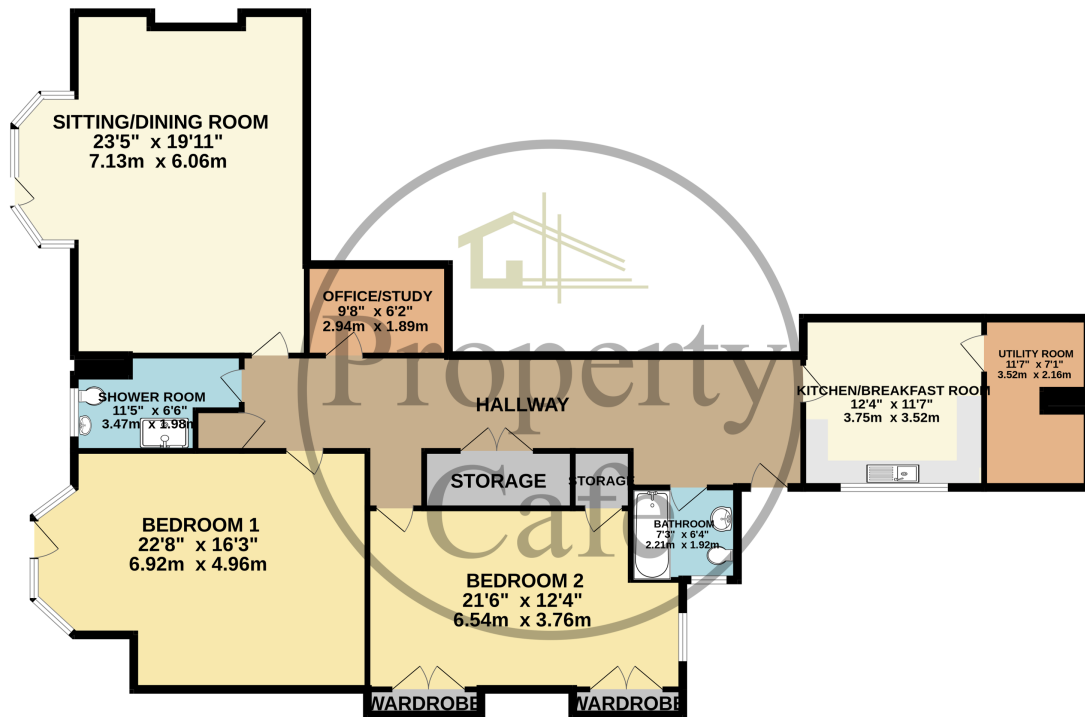
£450,000



- Seafront Garden Flat For Sale
- South Facing Lounge/Diner
- Modern Fitted Kitchen
- Two Vast Double Bedrooms
- Two Modern Fitted Bathrooms
- Separate Utility Area
- Office/Study Room
- Gardens Overlooking The Sea
- Gas Central Heating & Double Glazed
- Excellent Condition Throughout
- Sought After Seafront Location
- Sold With No Onward Chain
- Viewing Highly Recommended



GROUND FLOOR
1750 sq.ft. (162.5 sq.m.) approx.



TOTAL FLOOR AREA : 1750 sq.ft. (162.5 sq.m.) approx.
 Whilst every attempt has been made to ensure the accuracy of the floorplan contained here, measurements of doors, windows, rooms and any other items are approximate and no responsibility is taken for any error, omission or mis-statement. This plan is for illustrative purposes only and should be used as such by any prospective purchaser. The services, systems and appliances shown have not been tested and no guarantee as to their operability or efficiency can be given.
 Made with Metropix ©2023