

FOR SALE

£514,950 Freehold



**WOODHOUSE**  
PROPERTY CONSULTANTS

# 44 Prospect Road, Cheshunt, Hertfordshire. EN8 9QU

Head Office  
7, Turners Hill, Cheshunt, Waltham Cross, EN8 8NQ

01992 637777  
info@woodhouseproperty.co.uk

## ABOUT THE PROPERTY

Woodhouse are pleased to offer this 4-bedroom home situated in an ever-desirable neighbourhood of Cheshunt. Offered CHAIN-FREE, meaning you can move in as quickly as your solicitor allows!

To the ground floor, this ideal family home benefits from a spacious and extended Lounge-Diner to the rear. To the front there is the Kitchen, and the garage has been well-converted into the 4th Bedroom with its own 3-piece Ensuite.

To the 1st Floor there are three more double Bedrooms and the 4-piece Family Bathroom. Externally to the front there is off-street parking for three cars, and the rear benefits from a lovely hosting garden complete with veranda.

Prospect Road is popular with families due to its ideal location. There are desirable schools nearby (including the highly-regarded Burleigh School which is just a stone's throw away). The shops & eateries of the High Street and the Old Pond are at hand, and within walking distance there is also Cheshunt Station which takes you straight into Liverpool St in 20 minutes. Further transport links include the A10 and M25, both within minutes' drive. And finally Brookfield Centre's shops / eateries are in walking distance, as is Lea Valley Nature Reserve for walks and bike rides.

Contact Woodhouse today to discuss further and arrange a viewing to see for yourself what this home has to offer you and your family! Viewings available 7 days a week.

## FEATURES

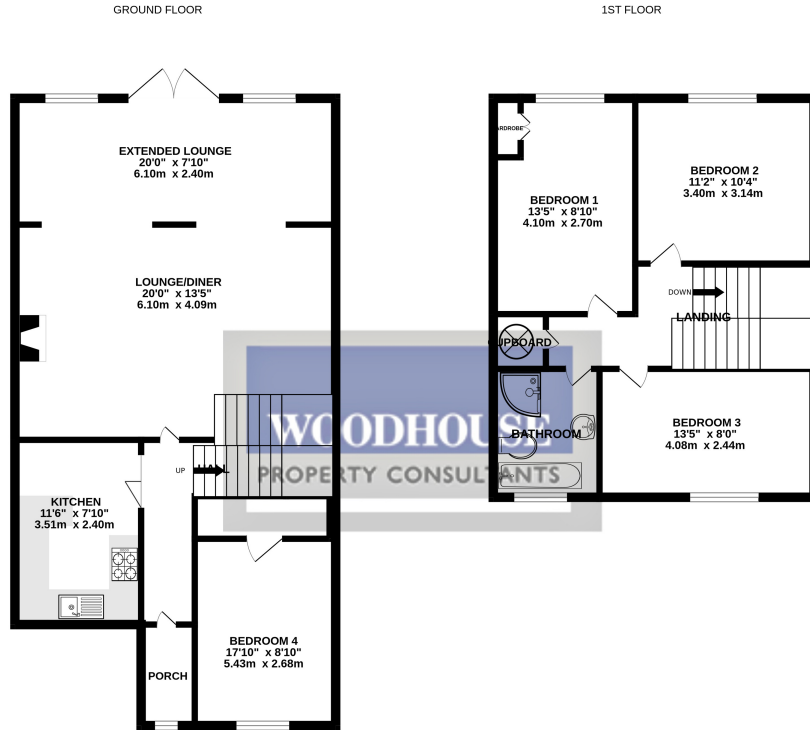
- CHAIN-FREE
- 4 x Bedrooms
- Ground floor Bedroom with En-suite
- Extended to the rear
- Large Lounge-Diner
- Triple Driveway
- Lovely Garden with veranda
- Highly desirable neighbourhood
- Amenities of Old Pond & Brookfield at hand
- Stones throw from great schooling



# ROOM DESCRIPTIONS



# FLOORPLAN



Whilst every attempt has been made to ensure the accuracy of the floorplan contained here, measurements of doors, windows, rooms and any other items are approximate and no responsibility is taken for any error, omission or mis-statement. This plan is for illustrative purposes only and should be used as such by any prospective purchaser. The services, systems and appliances shown have not been tested and no guarantee as to their operability or efficiency can be given.  
Made with Metropix 6/2024

## EPC

