



## **Mayfield Gardens, Staines- upon-Thames, Surrey, TW18**

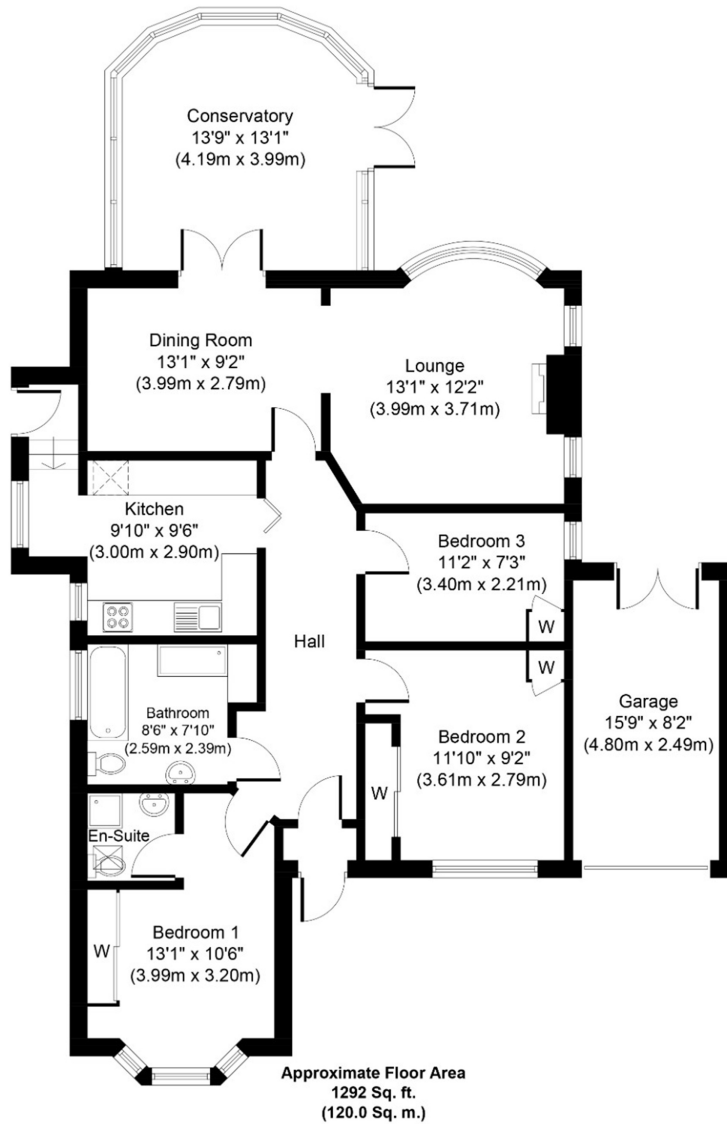
### **3LG**

HUGELY SPACIOUS DETACHED BUNGALOW SITUATED ALONG MUCH SOUGHT AFTER ROAD IDEALLY LOCATED FOR STAINES TOWN CENTRE, RIVER THAMES & LOCAL MOTORWAY NETWORKS. The property benefits from a spacious lounge/diner, modern fitted kitchen, conservatory, three well-proportioned bedrooms (en-suite to Bed 1), further luxury bathroom, large secluded rear garden, extensive off-street parking and garage. Part/Unfurnished. Available 5th April. Viewings Highly Recommended!

## ROOM DESCRIPTIONS

---

# FLOORPLAN



Whilst every attempt has been made to ensure the accuracy of the floor plan contained here, measurements of doors, windows, rooms and any other items are approximate and no responsibility is taken for any error, omission, or mis-statement. This plan is for illustrative purposes only and should be used as such by any prospective purchaser or tenant. The services, systems and appliances shown have not been tested and no guarantee as to their operability or efficiency can be given.

Copyright V360 Ltd 2021 | [www.houseviz.com](http://www.houseviz.com)

127a, High Street, Staines-upon-Thames, TW18 4PD

01784 451458

[staines@gregory-brown.co.uk](mailto:staines@gregory-brown.co.uk)