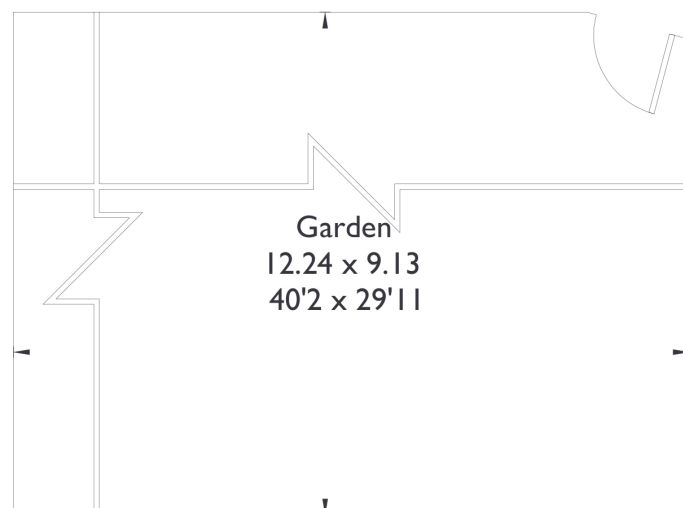


## Dryden Avenue , W7 IES

Approximate Floor Area = 68.1 sq m / 733 sq ft



(Not Shown In Actual Location / Orientation)



### First Floor



#### 3 BEDROOM FLAT

## Dryden Avenue, W7 £475,000

Welcome to this stunning top-floor maisonette flat, offering three spacious bedrooms and a beautifully designed bathroom. The property opens into an impressive open-plan kitchen, living, and dining area, perfect for modern living and entertaining. The bespoke kitchen boasts exquisite marble countertops and elegant gold accents, adding a touch of luxury to the space.

#### FEATURES

- Three Bedrooms
- One Bathroom
- Open Plan Kitchen/Living
- Private Garden
- Drayton Manor High School
- Hanwell Station (Elizabeth Line)
- EPC Rating C





### 3 BEDROOM FLAT

## Dryden Avenue, W7

Each of the bedrooms is generously sized, while the bathroom continues the theme of sophistication with its unique marble finish.

Situated in a prime location, the flat is just a 10-minute walk from Hanwell Station and a 5-minute walk from Drayton Green Station, offering excellent transport links. Additionally, it falls within the catchment area for the highly regarded Drayton Manor High School, making it an ideal choice for families. EPC Rating C.

