

£260,000
Leasehold



THOMAS CONNOLLY

ESTATE AGENTS | LETTING AGENTS | NEW HOMES | PROPERTY MANAGEMENT



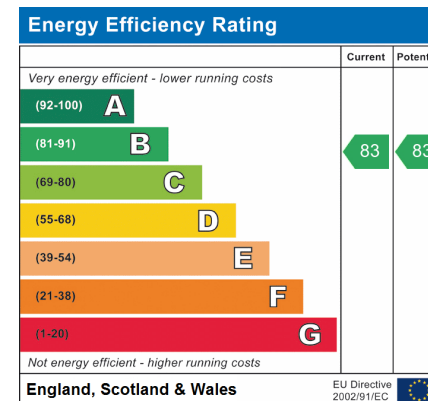
Summary of Property

Thomas Connolly Estate Agents are pleased to present this three bedroom second floor apartment situated in the popular location of Medbourne, within close proximity to the Westcroft shopping district, schools, bus routes and other further amenities.

The accommodation in brief comprises; entrance hall, kitchen, sitting room, three bedrooms, en-suite shower room to the master bedroom and a family bathroom. This property also benefits from a single garage.

Please note the following charges: Ground rent: £250pa Service charge £2104pa. The lease terminates in 2127.

Please contact us for further information or to confirm your viewing appointment.



Room Descriptions

SECOND FLOOR APARTMENT

ENTRANCE HALL

KITCHEN

13' 8" x 8' 5" (4.17m x 2.57m)

SITTING ROOM

16' 7" x 12' 3" (5.05m x 3.73m)

BEDROOM ONE

12' 8" x 13' 10" (3.86m x 4.22m)

EN-SUITE SHOWER ROOM

BEDROOM TWO

12' 3" x 13' 3" (3.73m x 4.04m)

BEDROOM THREE

10' 1" x 8' 0" (3.07m x 2.44m)

FAMILY BATHROOM

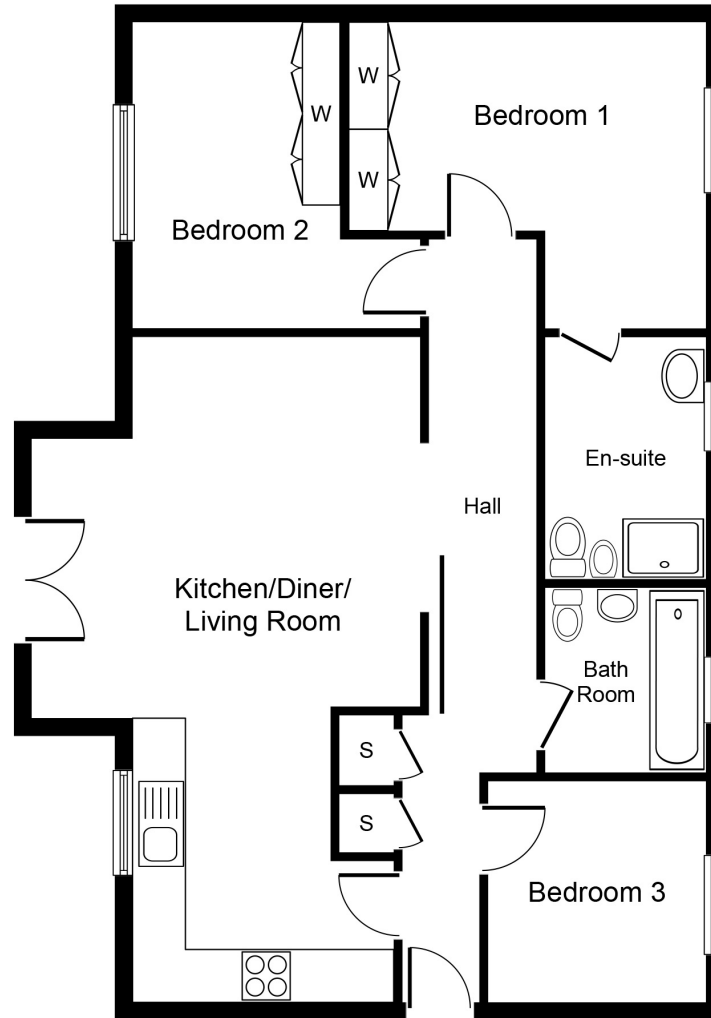
SINGLE GARAGE

PLEASE NOTE

These property particulars do not constitute part or all of an offer or contract. All measurements are stated for guidance purposes only and may be incorrect. Details of any contents mentioned are supplied for guidance only and must also be considered as potentially incorrect. Thomas Connolly Estate Agents advise perspective buyers to recheck all measurements prior to committing to any expense. We confirm we have not tested any apparatus, equipment, fixtures, fittings or services and it is within the prospective buyers interests to check the working condition of any appliances prior to exchange of contracts. Thomas Connolly Estate Agents has not sought to verify the legal title of the property and the buyers must obtain verification from their solicitor

THOMAS CONNOLLY

ESTATE AGENTS | LETTING AGENTS | NEW HOMES | PROPERTY MANAGEMENT



Second Floor

Whilst every attempt has been made to ensure the accuracy of the floor plan contained here, measurements of doors, windows, rooms and any other items are approximate and no responsibility is taken for any error, omission, or mis-statement. This plan is for illustrative purposes only and should be used as such by any prospective purchaser or tenant. The services, systems and appliances shown have not been tested and no guarantee as to their operability or efficiency can be given.

Copyright V360 Ltd 2023 | www.houseviz.com