

Prestbury Drive

Warminster, BA12 9LD

COOPER
AND
TANNER



£250,000 Freehold

🛏️ 2 🛋️ 1 🚿 1 EPC C

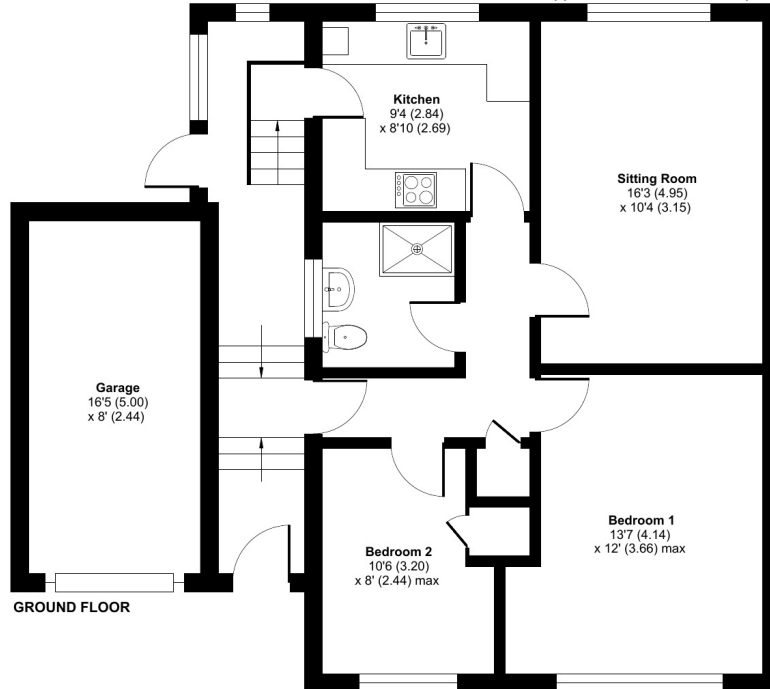
Description

Situated in the sought after location of Prestbury Drive, this semi detached bungalow enjoys superb views to the rear and has the benefit of south facing, terraced gardens, attached single garage and driveway parking. In brief the accommodation comprises entrance porch with utility area to one end, steps up into the inner hallway, sitting room with wood burning stove and views to the rear, kitchen with a range of fitted wall and base units with space for appliances and a door leading into the side porch/utility area. There are also two bedrooms and a shower room. Internal viewing comes highly recommended.

Prestbury Drive, Warminster

Approximate Area = 881 sq ft / 82 sq m (includes garage)

For identification only - Not to scale



Floor plan produced in accordance with RICS Property Measurement Standards incorporating International Property Measurement Standards (IPMS2 Residential). © nichecom 2022. Produced for Cooper and Tanner. REF: 808906



Features

- Semi detached bungalow with superb views to the rear
- South facing terraced gardens
- Garage and parking
- Sought after location
- Sitting room with views
- Kitchen
- Two bedrooms
- Shower room
- Side porch with utility area
- Viewing re

Local Information

- Council Tax Band B
- Tenure Freehold
- EPC Rating C

WARMINSTER OFFICE

Telephone 01985 215579

48-50, Market Place, Warminster, Wiltshire BA12 9AN

warminster@cooperandtanner.co.uk

**COOPER
AND
TANNER**

Important Notice: These particulars are set out as a general outline only for the guidance of intended purchasers and do not constitute, nor constitute part of, an offer or contract. All descriptions, dimensions, reference to condition and necessary permissions for use and occupation, warranties and other details are given without responsibility and any intending purchasers should not rely on the m as statements or representations of fact but must satisfy themselves by inspection or otherwise as to the correctness of each of them.

