

# Westhay Moor

Cheddar Woods , BS27 3DB

COOPER  
AND  
TANNER



£125,000

An opportunity to own a pre-loved lodge in good condition set within an award winning development. It is set within spacious plot, the lodge is ideal for those looking for a holiday home.

# Westhay Moor Cheddar Woods BS27 3DB



---

**£125,000**

## DESCRIPTION

An opportunity to own a pre-loved lodge in good condition set within an award winning development. It is set within spacious plot, the lodge is ideal for those looking for a holiday home.

A unique opportunity to own a pre-loved lodge in immaculate condition. Available on an elevated plot, this lodge is ideal for those looking for the perfect holiday home. The Lodge blends style with function, light and space and innovation with design-all combined in perfect harmony.

The kitchen is filled with light and is fully fitted and leads into the living room which is furnished with sofas and a dining room table and opens onto the balcony.

The clever space continues into the master bedroom which benefits from a built in wardrobe and its own en suite bathroom. There is entry into the bathroom and there are two further bedrooms and a cloakroom another double bedroom with a built in wardrobe and a family bathroom that is fitted with a panelled bath, WC and basin.

## OUTSIDE

Outside the lodge, you can relax on the spacious balcony, complete with rattan furniture, enjoying southerly views to the front. You also have allocated block paved parking.

On site there are plenty of amenities, something to please everyone! Ranging from facilities such as tennis, basketball, five-a-side football, climbing walls, a farm shop heated swimming pool sauna and steam room, fitted gymnasium, spas, golf stimulator, ten pin bowling, restaurant and bar. There really is something for all the family to enjoy. Cheddar Woods is the ideal location for a family get away.

## TENURE

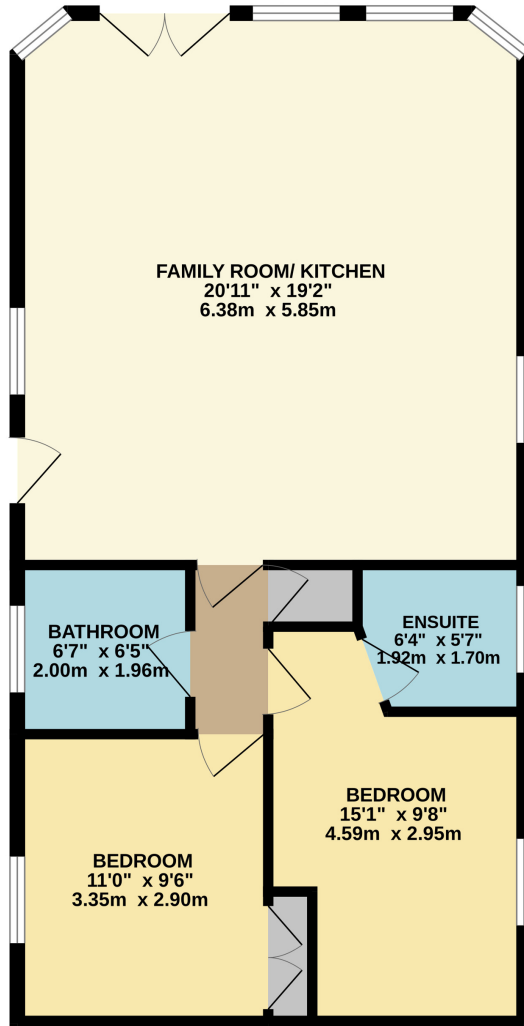
Licence Agreement







GROUND FLOOR  
733 sq.ft. (68.1 sq.m.) approx.



TOTAL FLOOR AREA: 733 sq.ft. (68.1 sq.m.) approx.

Whilst every attempt has been made to ensure the accuracy of the floorplan contained here, measurements of doors, windows, rooms and any other items are approximate and no responsibility is taken for any error, omission or mis-statement. This plan is for illustrative purposes only and should be used as such by any prospective purchaser. The services, systems and appliances shown have not been tested and no guarantee as to their operability or efficiency can be given.  
Made with Metropix ©2024

### CHEDDAR OFFICE

Telephone 01934 740055

Unit 2, Union Street, Cheddar, Somerset BS27 3NA

[cheddar@cooperandtanner.co.uk](mailto:cheddar@cooperandtanner.co.uk)

**COOPER  
AND  
TANNER**

Important Notice: These particulars are set out as a general outline only for the guidance of intended purchasers and do not constitute, nor constitute part of, an offer or contract. All descriptions, dimensions, reference to condition and necessary permissions for use and occupation, warranties and other details are given without responsibility and any intending purchasers should not rely on the m as statements or representations of fact but must satisfy themselves by inspection or otherwise as to the correctness of each of them.

