



hastings  
INTERNATIONAL



Elizabeth Square

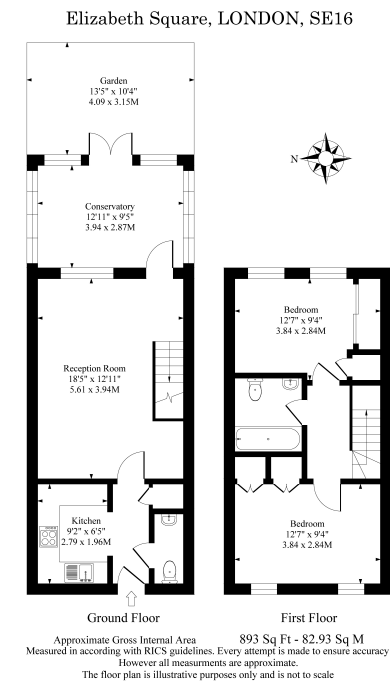
£2,500 pcm

## 6 Elizabeth Square, LONDON SE16 5XN

A stunning two bedroom mid terrace townhouse with private parking located in this fantastic riverside development with 1 bathroom and an additional downstairs WC.

This stunning two-bedroom mid terrace townhouse in the sought-after Elizabeth Square riverside development, SE16 offers generous living space across the ground and first floors, measuring approximately 893 sq ft. With its own private parking space, conservatory, and private garden, this home blends comfort, practicality, and charm in an exceptional location. Beautifully presented throughout, the property features a spacious reception room with wooden flooring, a bright conservatory opening onto the garden, and a separate fully fitted kitchen. There's also a convenient downstairs WC, while upstairs you'll find two well-proportioned bedrooms, a modern bathroom, and plenty of built-in storage throughout. Situated in a quiet riverside enclave, yet close to local amenities and excellent transport links including Rotherhithe and Canada Water stations, this maisonette is ideal for professionals, couples, or small families seeking a peaceful home with easy access to central London and Canary Wharf.

- Garden
- Additional WC
- Wooden Floors
- Riverside Development
- Conservatory
- 2 Bedrooms
- Private Parking







Energy Efficiency Rating		
	Current	Potential
Very energy efficient - lower running costs		
(92+) <b>A</b>		
(81-91) <b>B</b>		<b>88</b>
(69-80) <b>C</b>	<b>74</b>	
(55-68) <b>D</b>		
(39-54) <b>E</b>		
(21-38) <b>F</b>		
(1-20) <b>G</b>		
Not energy efficient - higher running costs		
<b>England, Scotland &amp; Wales</b>	EU Directive 2002/91/EC	