



Middle Barn, North End Road, Little Yeldham, Halstead, Essex, CO9 4LE

- SUPERB BARN CONVERSION
- FOUR BEDROOMS ALL WITH EN-SUITE FACILITIES
- STUNNING CONTEMPORARY KITCHEN
- LARGE GARDEN
- DOUBLE CART LODGE
- IMPRESSIVE GALLERIED LANDING
- STUDY/SNUG
- CLOAKROOM & UTILITY ROOM
- VIEWING HIGHLY RECOMMENDED



PROPERTY DESCRIPTION

Situated in the delightful hamlet of Little Yeldham surrounded by farm land is this beautifully presented barn conversion offering extensive and charming accommodation over two levels. Middle Barn offers bright and airy, versatile accommodation throughout and offers an array of wealth and period features with modern and contemporary finishes.

Situated in a secluded location amongst two other barn conversions with farm land views to the rear, the accommodation comprises of a 51ft open plan lounge/kitchen, four bedrooms all with en-suite facilities, study/snug, utility room and cloakroom. The exterior offers a large garden and double cart lodge.

Little Yeldham is a peaceful hamlet surrounded by farmland. The nearby village of Great Yeldham offers shops, post office, pubs, doctors surgery and vets for everyday needs with a village primary school and parish church. Additional facilities can be found in the market towns of Sudbury which has a commuter line, Halstead and Braintree which has a mainline station to London Liverpool Street. Stansted airport is located under 30 miles from the property.



ROOM DESCRIPTIONS

PROPERTY INFORMATION

OPEN PLAN LIVING AREA 51' 11" x 30' 6"
(15.83m x 9.30m)

KITCHEN 31' 9" x 19' 0" (9.70m x 5.80m)

STUDY 10' 11" x 8' 10" (3.33m x 2.70m)

UTILITY ROOM 9' 10" x 8' 10" (3.00m x 2.70m)

BEDROOM 21' 1" x 10' 9" (6.45m x 3.30m)

ENSUITE 7' 2" x 7' 6" (2.20m x 2.30m)

BEDROOM 14' 11" x 13' 5" (4.55m x 4.10m)

ENSUITE 14' 11" x 5' 10" (4.55m x 1.80m)

PLANT ROOM 8' 10" x 3' 7" (2.70m x 1.10m)

GALLERIED LANDING 30' 6" x 5' 1" (9.30m x 1.55m)

BEDROOM 14' 1" x 13' 9" (4.30m x 4.20m)

ENSUITE 14' 1" x 5' 10" (4.30m x 1.80m)

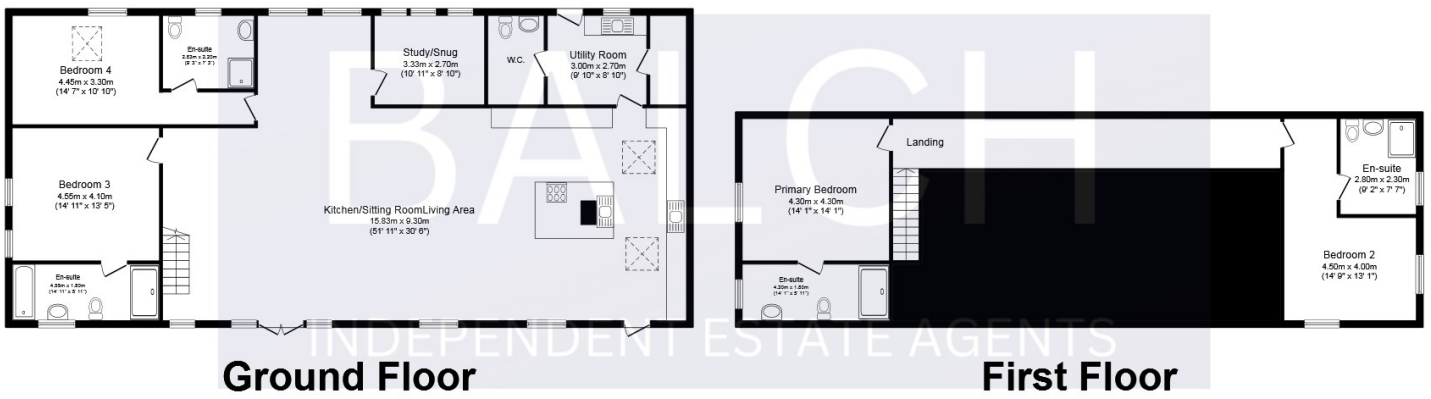
BEDROOM 14' 9" x 13' 1" (4.50m x 4.00m)

ENSUITE 9' 2" x 7' 6" (2.80m x 2.30m)

DOUBLE CART LODGE



FLOORPLAN



Total floor area 312.5 m² (3,364 sq.ft.) approx

This plan is for illustration purposes only and may not be representative of the property. Plan not to scale. Powered by PropertyBox