



9 Whittle Court,  
Knowlhill, Milton Keynes, MK5 8FT

Tel: 01908 231 551



mail@elevationstateagents.com



**2 Union Castle Row, Brooklands, Milton  
Keynes, Buckinghamshire, MK10 7GQ**

**£415,000 Freehold**

- Outstanding school catchment
- Close to M1
- Local amenities within walking distance
- Four double bedrooms
- Desirable location of Brooklands
- CHAIN FREE
- EPC Rating



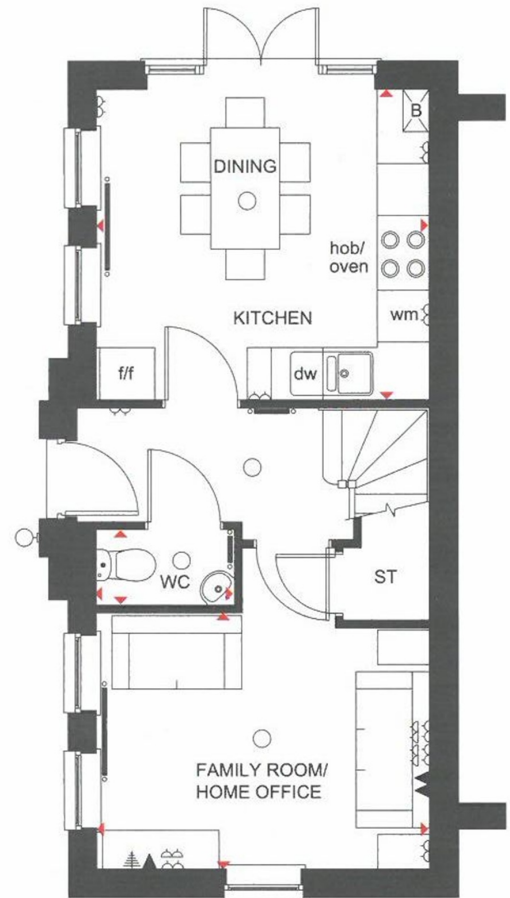
See our full selection of properties online at [www.elevationstateagents.com](http://www.elevationstateagents.com)





## Disclaimer

Whilst we have endeavoured to prepare our sales particulars accurately none of the services, appliances or equipment have been tested. A buyer should satisfy themselves on such matters prior to purchase. Any measurements or distances mentioned in these particulars are for guide reference only. If such particulars are fundamental to a purchase, buyers should rely on their own enquiries. All enquiries should be directed to Elevation Estate Agents in the first instance.



### Ground Floor

Kitchen/ Dining Room	3860 x 3587mm	12'8" x 11'9"
Family Room/ Home Office	3860 x 2988mm	12'8" x 9'10"
WC	1601 x 846mm	5'3" x 2'9"

[Approximate dimensions]