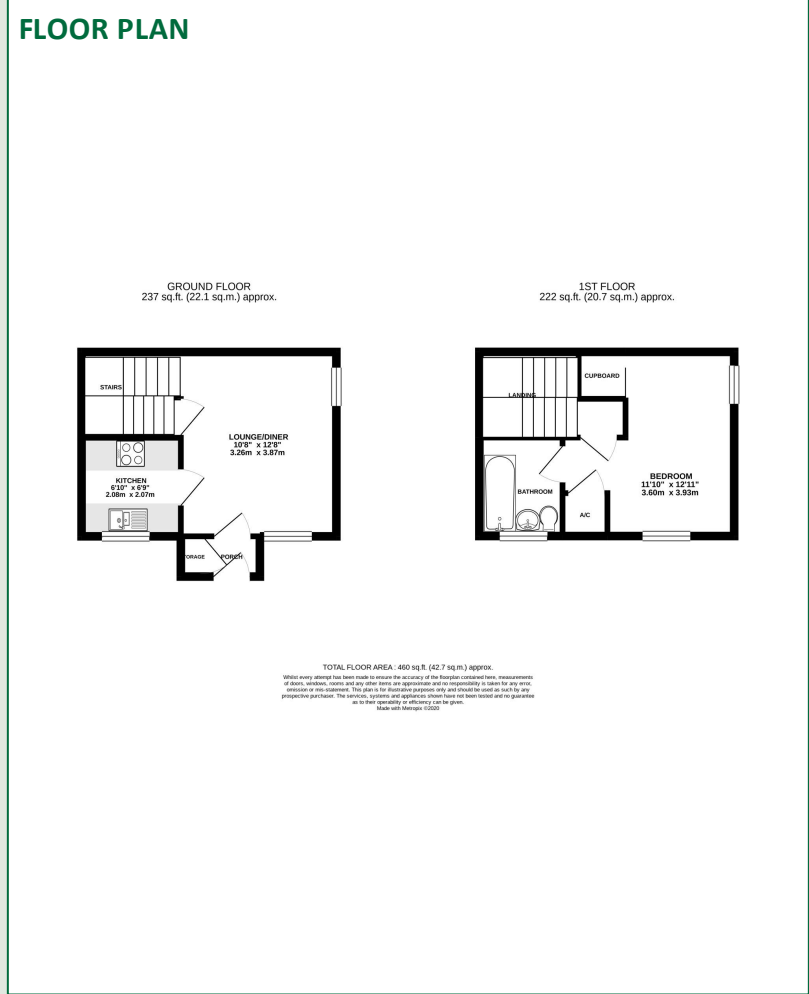


FOR SALE
£220,000



DESCRIPTION

A well proportioned one bedroom cluster house situated close to Newbury town. This conveniently located property boasts a small front garden, garage and driveway parking. The accommodation comprises:- entrance porch, lounge, kitchen, double bedroom and bathroom.



- 🏡 Front Garden
- 🏡 Garage
- 🏡 Driveway parking
- 🏡 One bedroom cluster house
- 🏡 No onward chain
- 🏡 Lounge
- 🏡 Kitchen
- 🏡 Double bedroom
- 🏡 Bathroom
- 🏡 Gas fired central heating
- 🏡 Double glazing

