



19 Mayflower Lane, Langford, Biggleswade, Bedfordshire, SG18 9FR

£335,000

Discover this large mid-terraced family home located in the charming and sought-after area of Langford. Boasting three good sized bedrooms, a spacious lounge, and an inviting kitchen/diner, this property is perfect for those looking for a comfortable and versatile living space. With its west-facing garden providing ample natural light and a peaceful outdoor retreat, this home truly offers a wonderful blend of indoor and outdoor living.

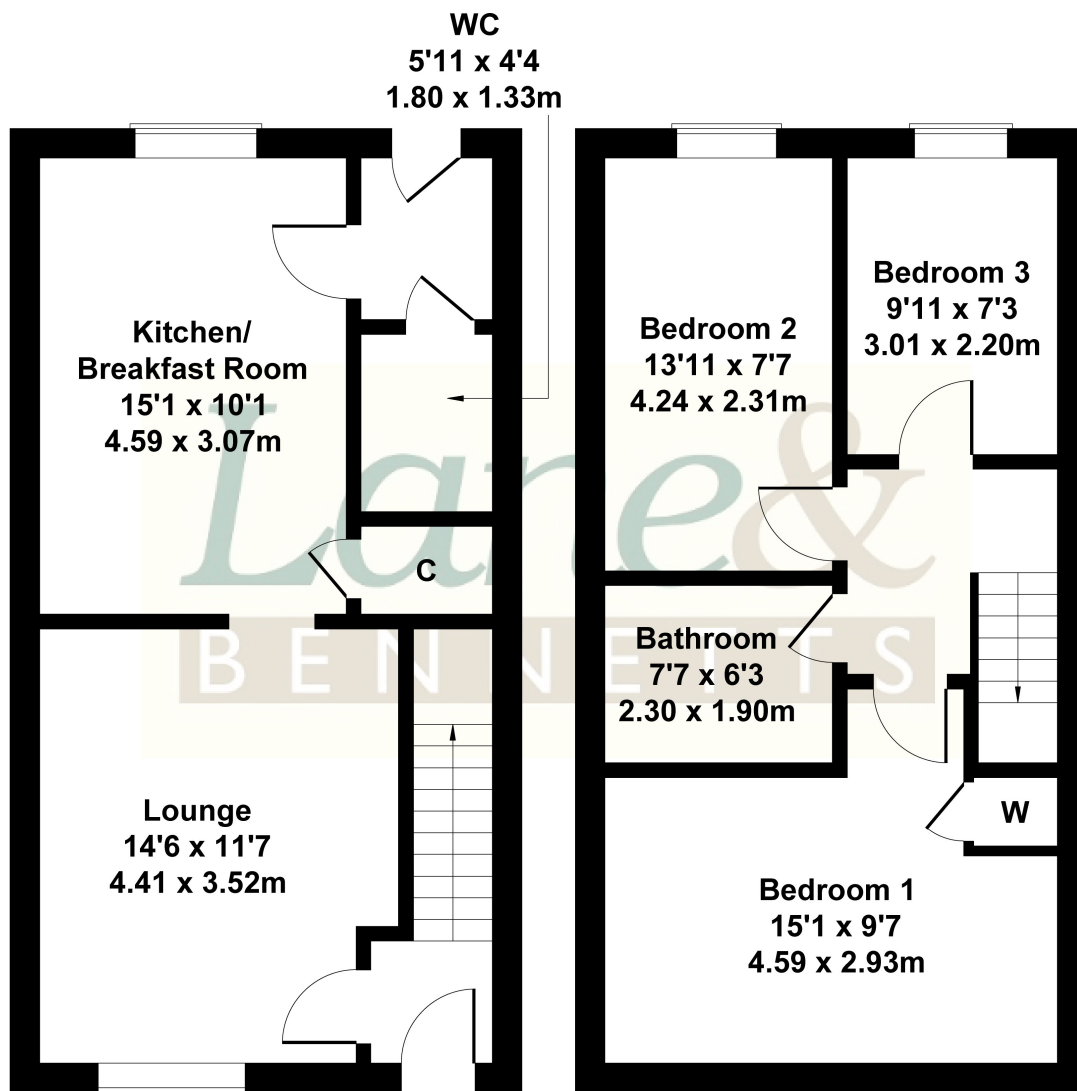
One of the standout features of this property is the inclusion of two allocated parking spaces, significant convenience for families or professionals with multiple vehicles. Additionally, the presence of a cloakroom and a well-appointed bathroom enhances the functionality of this



19 Mayflower Lane, Langford

Approximate Gross Internal Area

904 sq ft - 84 sq m



GROUND FLOOR

FIRST FLOOR

Not to Scale. Produced by The Plan Portal 2025
For Illustrative Purposes Only.

- STAR BUY - KEYS FOR VIEWING
- NO CHAIN - VIEW TODAY
- LARGE MID TERRACED HOME
- LOUNGE + KITCHEN/DINER
- CLOAKROOM
- THREE GOOD SIZED BEDROOMS
- BATHROOM
- WEST FACING GARDEN
- TWO ALLOCATED PARKING SPACES
- EPC BAND B / COUNCIL TAX BAND C

