

**Telephone**

+44 (0)1268 947947

sales@elliottandsmith.co.uk

**Website**

www.elliottandsmith.co.uk

Elliott and Smith Partnership

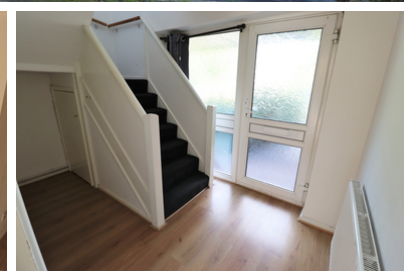
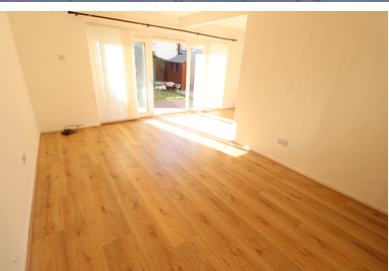
57 High Street

Rayleigh

Essex SS6 7EW



SALES.  
LETTINGS.  
ADVICE.



**Long Lane, Hockley**  
**£1,350 pcm**

3 BEDROOM FAMILY HOME SITUATED ON A LARGE CORNER PLOT IN A SEMI RURAL PART OF HULLBRIDGE. Fully double glazed and gas central heating throughout. Large 'L' shaped living room / diner opening to kitchen. Generous bedroom sizes & first floor bathroom. The property also has a driveway & garage. Available now!

- 3 GENEROUS SIZED BEDROOMS
- LARGE 'L' SHAPED LOUNGE DINER
- DINING AREA OPEN TO KITCHEN
- SITUATED ON A LARGE CORNER PLOT
- DRIVEWAY & GARAGE
- SET IN A SEMI RURAL AREA OF HULLBRIDGE
- SHORT DRIVE TO HOCKLEY, ROCHFORD & RAYLEIGH

**SPACIOUS  
ENTRANCE HALL**

**LOUNGE DINER**

19' 2" x Narrows to 10'  
5" x 15' 5" (5.84m x  
4.70m)

**KITCHEN**

11' 0" x 8' 4" (3.35m x  
2.54m)

**FIRST FLOOR  
LANDING**

**BEDROOM ONE**

14' 0" x 10' 1" (4.27m x  
3.07m)

**BEDROOM TWO**

10' 4" x 10' 1" (3.15m x  
3.07m)

**BEDROOM THREE**

10' 4" x 8' 9" (3.15m x  
2.67m)

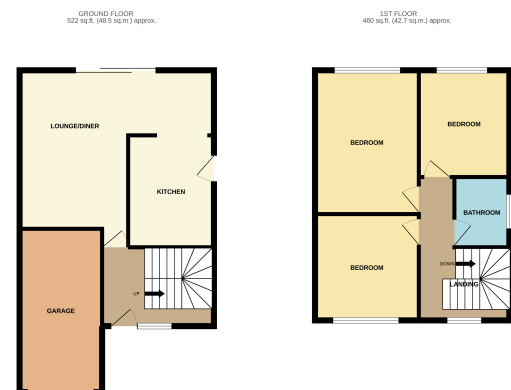
**THREE PIECE  
BATHROOM**

**REAR GARDEN**

**FRONT SIDE GARDEN**

**GARAGE**

**COUNCIL TAX BAND D**



**VIEWING ARRANGEMENTS**

Viewing is strictly by appointment only through Elliott and Smith Partnership.

**DISCLAIMER PROPERTY DETAILS**

These particulars, whilst believed to be accurate are set out as a general outline only for guidance and do not constitute any part of an offer or contract. Intending purchasers should not rely on them as statements or representation of fact, but must satisfy themselves by inspection or otherwise as to their accuracy. We have not carried out a detailed survey nor tested the services, appliances and specific fittings. Room sizes should not be relied upon for carpets and furnishings. The measurements given are approximate. No person in this firm's employment has the authority to make or give any representation or warranty in respect of the property.