



Wimborne Road East  
Ferndown, Dorset, BH22 9NU

# LEASEHOLD PRICE

## £219,950

***“A light and spacious top floor apartment with its own private staircase and parking”***

This conveniently located and generous sized two double bedroom, one bathroom, one shower room top floor apartment has its own private staircase and allocated parking.

This well-proportioned top floor apartment is the only apartment located on the second floor and is offered in immaculate condition. The property is conveniently located for amenities.

- **A two double bedroom top floor apartment with allocated parking**
- **Communal entrance hall** with a private staircase giving access to Flat 6
- Spacious 13ft **entrance hall** with entry phone intercoms system and a loft hatch giving access to a loft space
- **22ft Lounge/dining room** with ample space for a large sofa and dining table and chairs
- Generous sized **kitchen** incorporating ample worktops, a good range of units, integrated oven, hob and extractor, washing machine, dishwasher, fridge/freezer, attractive tiled splashbacks and a double glazed Velux roof window
- **Bedroom one** is a generous sized double bedroom
- **En-suite shower room** finished in a white suite incorporating a corner shower cubicle, wc, with concealed cistern, wash hand basin with vanity storage beneath and fully tiled walls
- **Bedroom two** is also a double bedroom
- Large 13ft **family bathroom** finished in a white suite incorporating a panelled bath with mixer taps and shower attachment, wc with concealed cistern, wash hand basin with vanity storage beneath, additional vanity storage and partly tiled walls
- **One allocated parking space**, with an area designated for **visitors parking**
- **Further benefits** include double glazing, a gas-fired heating system and entry phone intercoms system

Ferndown offers an excellent range of shopping, leisure and recreational facilities, with the town centre located approximately 900 metres away.

**Lease:** 111 years from June 2004

**Maintenance:** Currently £900 every 6 months, which includes the ground rent

**COUNCIL TAX BAND:** C

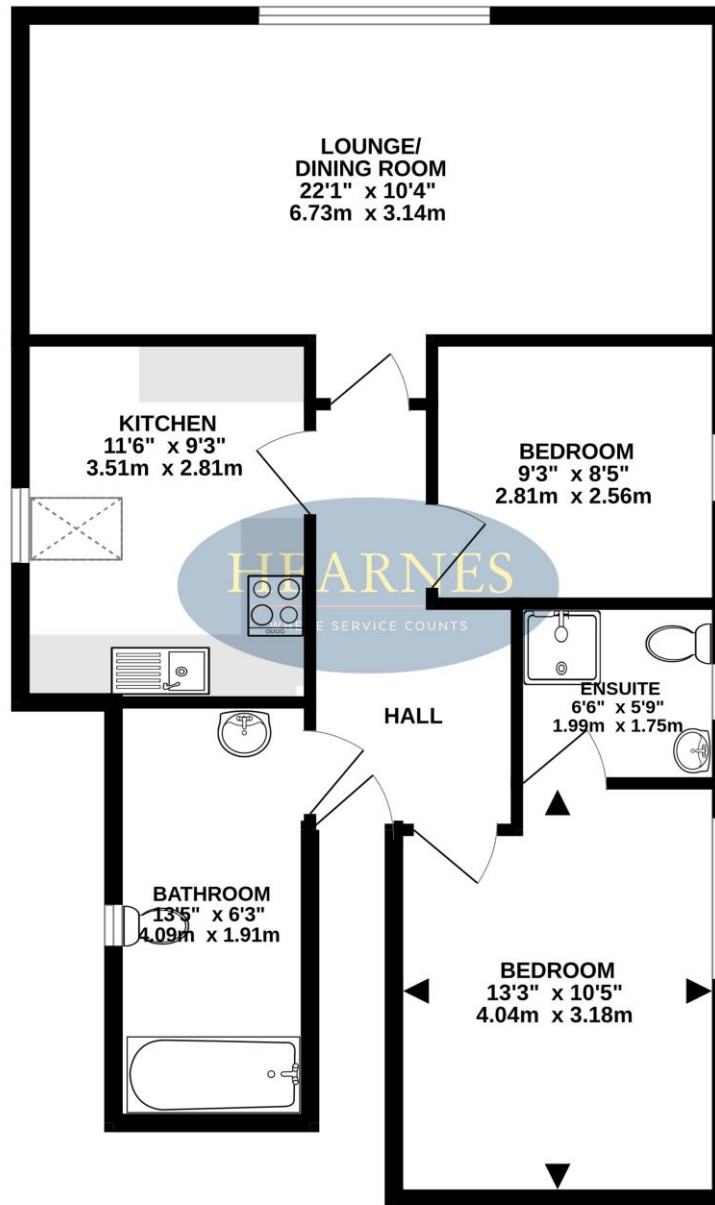
**EPC RATING:** C



AGENTS NOTES: The heating system, mains and appliances have not been tested by Hearnese Estate Agents. Any areas, measurements or distances are approximate. The text, photographs and plans are for guidance only and are not necessarily comprehensive. Whilst reasonable endeavours have been made to ensure that the information in our sales particulars are as accurate as possible, this information has been provided for us by the seller and is not guaranteed. Any intending buyer should not rely on the information we have supplied and should satisfy themselves by inspection, searches, enquiries and survey as to the correctness of each statement before making a financial or legal commitment. We have not checked the legal documentation to verify the legal status, including the leased term and ground rent and escalation of ground rent of the property (where applicable). A buyer must not rely upon the information provided until it has been verified by their own solicitors.

TOTAL FLOOR AREA : 750 sq.ft. (69.7 sq.m.) approx.

Whilst every attempt has been made to ensure the accuracy of the floorplan contained here, measurements of doors, windows, rooms and any other items are approximate and no responsibility is taken for any error, omission or mis-statement. This plan is for illustrative purposes only and should be used as such by any prospective purchaser. The services, systems and appliances shown have not been tested and no guarantee as to their operability or efficiency can be given.  
Made with Metropix ©2024



6-8 Victoria Road, Ferndown, Dorset. BH22 9HZ Tel: 01202 890890 Email: ferndown@hearnes.com www.hearnes.com

OFFICES ALSO AT: BOURNEMOUTH, POOLE, RINGWOOD & WIMBORNE

