



**Guide Price £150,000 to £175,000\***

Thursday 25<sup>th</sup> September 2025, 12pm  
The Theatre, The Royal Bath and West Showground,  
Shepton Mallet, BA4 6QN  
Bid remotely via Livestream, in person or by proxy.

2 West Bank  
Wookey Hole  
Nr Wells, BA5 1BT

**COOPER  
AND  
TANNER**

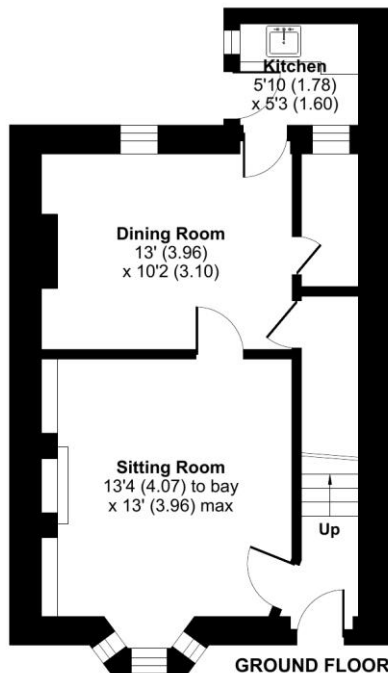




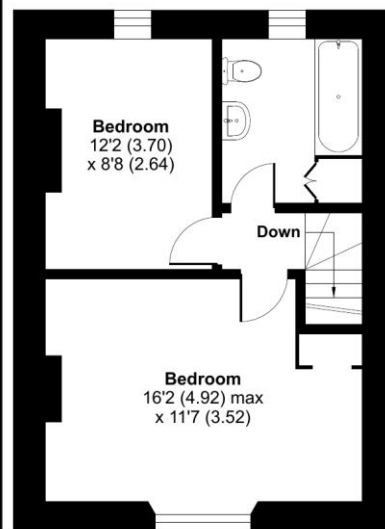
## West Bank, Wookey Hole, Wells, BA5

Approximate Area = 832 sq ft / 77.2 sq m

For identification only - Not to scale



GROUND FLOOR



FIRST FLOOR

# 2 West Bank Wookey Hole Nr Wells, BA5 1BT

There are three ways of bidding at the auction, these are:

1. Remotely via Livestream
2. In person on the day
3. By Proxy

Please use the link [www.cooperandtanner.co.uk/land-and-property](http://www.cooperandtanner.co.uk/land-and-property) to register to bid in any of the above ways for this lot.

Please note that all registrations must be completed at least 48 hours prior to the auction date. We will be unable to approve online registrations on the day of the auction.

 2  2  1 EPC C

## Auction Guide Price £150,000 to £175,000

### Description

A two bedroom mid terrace Victorian cottage requiring full renovation situated within the heart of the ever-popular village of Wookey Hole offering huge scope to create into a wonderful family home or holiday let if desired.

Upon entering the house is a hall leading into a light sitting room with double glazed bay window, fireplace, flagstone floors and views towards the village church. The dining room also has a fireplace, a walk-in pantry, walk-in understairs cupboard, a window seat overlooking the rear courtyard along with access to the kitchen which has a sink and door outside.

To the first floor are two double bedrooms, both with Victorian fireplaces. The largest of the bedrooms is to the front with double glazed window and views over the village and the second bedroom having views overlooking fields to the rear. The bathroom comprises a bath, toilet and wash hand basin.

### Outside

The garden is a 30 metre walk from the property and features mature trees, shrubs and bushes. A private courtyard is to the rear of the house accessed from the kitchen and has a small storage shed.

### Location

The property is located in the village of Wookey Hole. Wookey Hole is situated approximately two miles from the Cathedral City of Wells. It boasts a fantastic public house and the famous Wookey Hole Caves.

Wells is the smallest cathedral city in England. It caters for most everyday needs, offering good shopping facilities as well as restaurants and pubs, a cinema, churches of most denominations, together with open-air markets on Wednesdays and Saturdays. Schools are plentiful with the Cathedral School, the Blue School and a choice of primary schools in Wells, Millfield School in Street and Downside school in Stratton-on-the-Fosse are easily accessible. There are good road connections to Bristol, Bath, the motorway system and Bristol Airport, with rail links from Castle Cary (about 20 minutes drive away) to London Paddington.

### Directions

From Wells city centre follow signs to Wookey Hole. Pass Underwood Business Park on the right hand side and bear round to the right. Continue down the hill into the village passing Milton Lane on your right. Continue for approx 100m and the path for West Bank can be found on your right - immediately before The Wookey Hole Inn

### Completion

Completion has been set for 23<sup>rd</sup> October 2025 or earlier by agreement.

### Registering to bid and Administration fee

Cooper and Tanner require all bidders who wish to bid at our Auction to register beforehand, whether you are intending on bidding in the room, by proxy or online. As part of the registration process, you will be asked to provide card details in order that the Buyer's Administration Fee of £1350 inc VAT can be paid if you are successful. A week before the auction a hold will be placed on your account for this sum, which will then be released if you are unsuccessful. This fee will only be taken if you are the successful buyer. The fee is retained by Cooper and Tanner and does not form part of your deposit or completion settlement. Please also be aware that the Buyer's Administration fee is payable per lot purchased and applicable to all pre-auction sales. If you are successful in purchasing more than one lot, we will contact you following the auction to take subsequent payments for additional lots bought. All checks required by current anti-money laundering legislation must be satisfactorily completed, as part of the registration process before prior approval to bid will be granted; this will include providing proof of funds.

### Deposit

Successful bidders will be required to pay to the Cooper and Tanner Client Account the deposit of 10% of the purchase price within 24 hours of the auction. The account details will be provided to the successful bidder on conclusion of the auction. Once funds are cleared, they will be transferred on to the account of the solicitor acting for the seller. Please ensure that funds are in an account suitable to be able to make an Electronic Transfer from.

Ref: AUCWELJAT01082025

**Local Council:** Somerset Council. Telephone: 0300 123 2224

**Council Tax Band:** B

**Heating:** Gas central heating (not checked). Solar panels are fitted to the roof at the rear.

**Services:** Mains water, mains drainage, gas and electricity are all available at the property. They may not be currently connected and it is up to the purchaser to satisfy themselves in this regard.

**Tenure:** Freehold with Vacant Possession

**VAT:** The purchase price is not subject to VAT

**Viewing:** By appointment only through Cooper and Tanner, Wells – 01749 676524

### Solicitors

Oliver Costello  
Thrings LLP  
6 Drakes Meadow  
Swindon  
SN3 3LL



## Auction Notes

### Conditions of Sale

Unless otherwise stated, each Lot is sold subject to the Common Auction Conditions (4<sup>th</sup> ed.). We recommend all interested parties inspect the Common Auction Conditions prior to bidding.

### Sale details

The details of each lot have been prepared based on information given by the vendor and their solicitor. There may be occasions where the person acting on behalf of the Vendor does not know the property in detail. Therefore, potential purchasers must satisfy their own enquiries and should refer to the legal documents available.

### Legal packs

These are available to download from the Land and Property Auction page of the Cooper and Tanner website. Alternatively, they can be obtained from the Vendors' solicitors. There may be a charge payable direct to the solicitor. We recommend that each potential purchaser take independent legal advice on the content of the packs. Potential purchasers are deemed to have made all the necessary enquiries and purchase with full knowledge of the content of the legal packs.

### Registration of Interest

Cooper and Tanner encourage potential purchasers to register their interest in specific lots. This will enable the Auction Department to inform you of any amendments made to that lot during the lead up to the auction day.

### Tenure and Possession

Unless stated otherwise, the tenure of each lot is freehold and vacant possession will be given upon completion.

### Registering to bid

All those intending to bid at the auction must first register online at [Cooperandtanner.co.uk](http://Cooperandtanner.co.uk). Please note that we will not be taking registrations in the room.

### Questions

The Vendor's solicitors may be available for questions prior to the start of the auction. However, there may be occasions when they are unable to attend. Therefore, it is advisable that any queries have been answered before the date of the auction. Members of the Cooper and Tanner staff will be on hand and will be able to answer questions concerning the procedure. They will not be able to answer any legal questions. No further questions will be permitted once the auction has started.

### Bidding in the room

When bidding for a lot, please make your bid clear to the auctioneer or their clerk. The auctioneer will call the bidding three times, giving you the opportunity to place a final bid.

### Bidding online

When bidding online, you will be able to follow the auction via our livestream system. It will be made clear both on the camera and on the website what the current bid is and what bid is being invited. We strongly recommend that you have a consistent Internet connection and Cooper and Tanner cannot be held responsible for any loss of connection. Please be aware that there may be a slight time delay in the video footage and we would suggest that you follow the figure on the screen.

### Bidding by Proxy

Via the auction platform, you will be able to enter a proxy bid, which the auctioneer will execute on your behalf. However, we strongly recommend that where possible you attend the auction in person. All proxy bids must be entered on the system 48 hours prior to the start of the auction. If you are providing a proxy bid then this must be completed no later than 48 hours before the auction. We cannot guarantee that bids received after this time will be accepted.

### Fall of the Hammer

On the fall of the hammer, the successful bidder is under a binding contract to purchase that property. The purchaser must then present himself or herself to the auctioneer's clerk, giving their name, address, solicitor's details and a form

of identification. If you are bidding remotely or by proxy then a member of the Cooper and Tanner staff will complete the Memorandum of Sale on your behalf, as set out in the terms and conditions of the auction.

### Deposit

A deposit of 10% of the purchase price will be payable to the Cooper and Tanner Client Account within 24 hours of the end of the auction. Cash will not be acceptable and Cooper and Tanner do not have the facilities to take payment by credit or debit card.

### Fees

Potential buyers should be aware that there may be additional fees payable to the Vendor's solicitor on completion of the sale, details of which will be contained within the auction pack for each lot. At the launch of the property onto the market this information is not always available and so interested parties must refer to the auction pack and satisfy their enquiries.

### Lotting

The vendors reserve the right to amalgamate, sub-divide or withdraw any or all of their property.

### Areas and sale plans

The area and the sale plan have been calculated and produced using Promap Mapping software (Ordnance Survey licensed) and referenced where possible to the HMLR Title plan; however, they may not correspond with other mapping systems. The boundaries are clearly marked on site and potential purchasers should inspect them and make such enquiries as they deem necessary.

### \*Definition

#### Definition of Guide Prices

The guide price is an indication of the Vendor's current minimum price expectation at auction and the guide price, or range of guide prices, is given to assist prospective purchasers. The guide price can be adjusted by the vendor at any time up to the day of the auction, in light of the interest shown during the marketing period and bidders will be notified of this change on our website and by the auctioneer prior to the lot being offered.

#### Definition of Reserve Price

The reserve price is the Vendor's minimum acceptable price at auction and the figure below which the auctioneer cannot sell. It is usual but not always the case that a provisional reserve is agreed between the Vendor and the auctioneer at the start of marketing and the Final Reserve Price will be agreed between the auctioneer and the Vendor prior to the auction sale. Whilst the reserve price is confidential, it will usually be set within the quoted guide range and in any event will not exceed the highest quoted guide price.

### Important Notice

These particulars are set out as a general outline only for the guidance of potential purchasers and do not constitute an offer or contract or part of the same. All descriptions, dimensions, reference to condition and necessary permissions for use and occupation, warranties and other details are given without responsibility and any potential purchasers should not rely on them as statements or representations of fact but must satisfy themselves by inspection or otherwise as to the correctness of each of them. Any photographs and plans are contained within the catalogue to identify the property to potential purchasers. They do not show the extent of the property and must not be relied upon to be to scale. It should not be assumed that each lot has the necessary planning consents, building regulations or other consents. The vendors reserve the right to sell their property prior to auction. Please contact Cooper and Tanner prior to the auction to check the availability of each lot.

### GLASTONBURY OFFICE

telephone 01458 831077

41 High Street, Glastonbury, Somerset BA6 9DS

[glastonbury@cooperandtanner.co.uk](mailto:glastonbury@cooperandtanner.co.uk)

**COOPER  
AND  
TANNER**

Important Notice: These particulars are set out as a general outline only for the guidance of intended purchasers and do not constitute, nor constitute part of, an offer or contract. All descriptions, dimensions, reference to condition and necessary permissions for use and occupation, warranties and other details are given without responsibility and any intending purchasers should not rely on them as statements or representations of fact but must satisfy themselves by inspection or otherwise as to the correctness of each of them.

