

# FOR SALE

Weston Road,  
Chiswick, W4

Terraced House  
Chiswick

£1,150,000 fh

3  1  2 



**horton  
andgarton**

SALES / LETTINGS / PROPERTY MANAGEMENT

hortonandgarton.co.uk | Sales 020 3989 6464 | Lettings 020 3989 5454  
161 Chiswick High Road, London, W4 2DT





# FOR SALE

Weston Road,  
Chiswick, W4

Terraced House  
Chiswick

£1,150,000 fh

3  1  2 



**horton  
andgarton**

SALES / LETTINGS / PROPERTY MANAGEMENT

hortonandgarton.co.uk | Sales 020 3989 6464 | Lettings 020 3989 5454  
161 Chiswick High Road, London, W4 2DT



# FOR SALE

Weston Road,  
Chiswick, W4

Terraced House  
Chiswick

£1,150,000 fh

3  1  2 

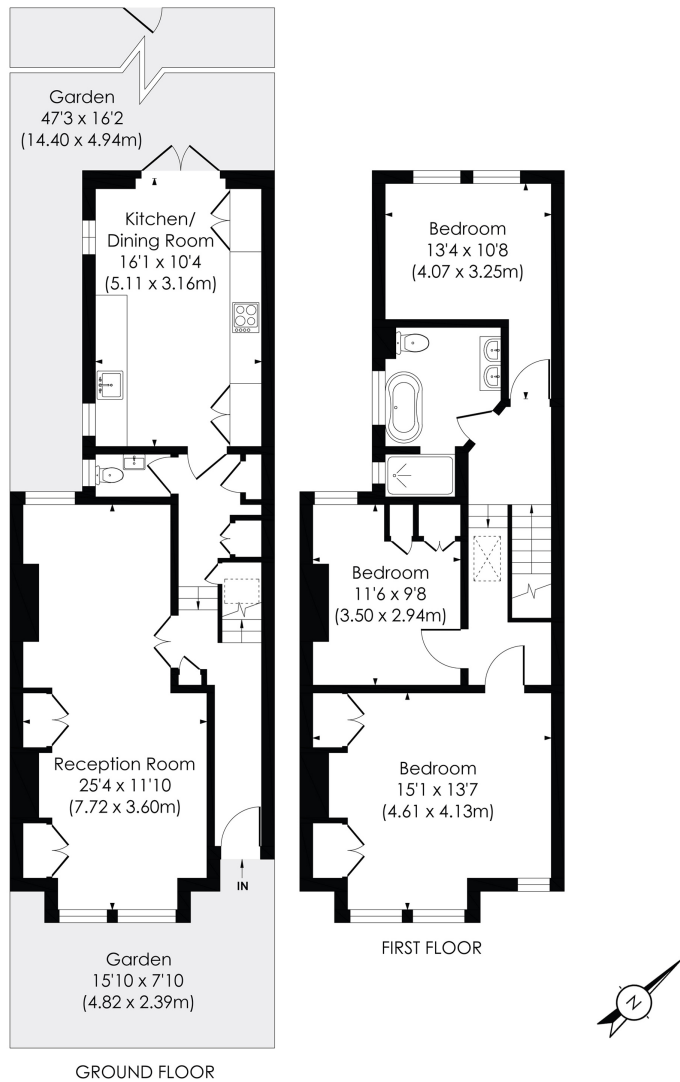


**horton  
andgarton**

SALES / LETTINGS / PROPERTY MANAGEMENT

hortonandgarton.co.uk | Sales 020 3989 6464 | Lettings 020 3989 5454  
161 Chiswick High Road, London, W4 2DT





**WESTON ROAD, W4**

Approx. Gross Internal Floor Area  
**1164 Sq' / 108.14 SqM**

**horton  
andgarton**

This floor plan has been prepared for the purpose of illustration only in accordance with the latest RICS code of measuring practice and is not to scale. All measurements and areas are approximate and whilst every effort has been made to ensure the accuracy of the plan contained here, no responsibility is taken for any error, omission or misstatement.



Edwardian bay fronted terraced house | Three  
bedrooms - Two bathrooms | 1164 Sq' - 108.14 SqM |  
EPC rating D | Turnkey finish | Chiswick Park



hortonandgarton.co.uk  
Sales 020 3989 6464  
Lettings 020 3989 5454

161 Chiswick High Road, London, W4 2DT