

hastings
INTERNATIONAL



Larch House

£375,000

Larch House, Ainsty Estate, London SE16 7DH

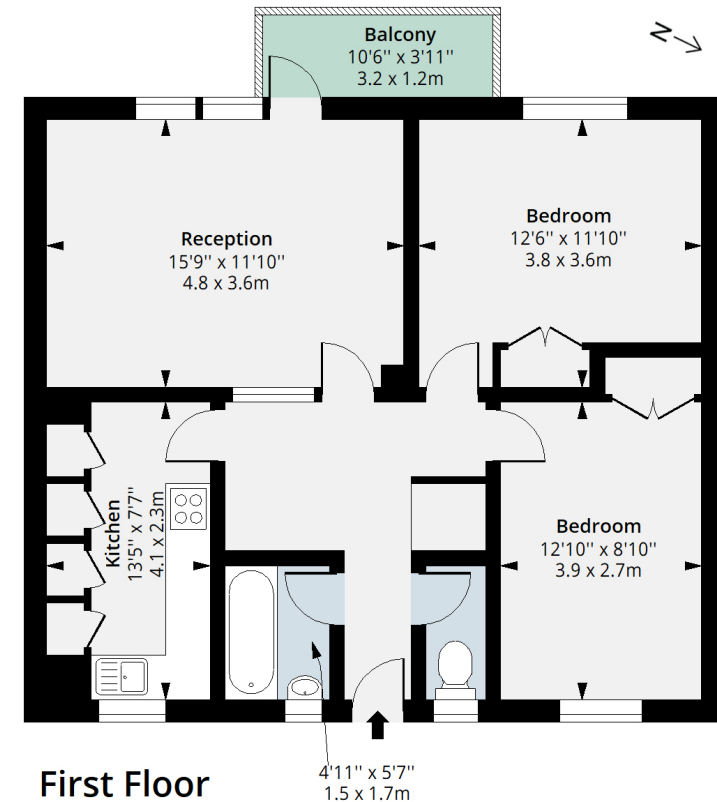
A well presented dual aspect two bedroom flat with private balcony located within Larch House, enjoying close proximity to Rotherhithe Overground Station, Canada Water underground station, Surrey Quays shopping center and the vast green spaces of Stave Hill Ecological Park.

Occupying part of the first floor, this well presented flat comprises entrance hall with storage cupboard, generous reception room with dining area and door to private balcony, separate fitted kitchen with work tops and storage cupboards, master bedroom with fitted wardrobe, guest bedroom two, bathroom and separate WC. The flat is available chain free and is considered ideally placed for convenient access to Canada Water and Rotherhithe stations, surrey quays shopping center and Stave Hill Ecological Park.

- Larch House SE16
- Two Bedrooms
- Private Blacony
- Chain Free
- Dual Aspect Flat
- Generous Reception Room
- Seperate Kitchen
- Excellent Location

Larch House SE16

Approx. Gross Internal Area 739 Sq Ft - 68.65 Sq M
Approx. Gross Balcony Area 37 Sq Ft - 3.44 Sq M



Measured according to RICS IPMS2. Floor plan is for illustrative purposes only and is not to scale. Every attempt has been made to ensure the accuracy of the floor plan shown, however all measurements, fixtures, fittings and data shown are an approximate interpretation for illustrative purposes only. 1 sq m = 10.76 sq feet.
lpaplus.com



