



Caernarvon Close
Stretton
Burton-on-Trent
Staffordshire
DE13 0ET

Offers In Excess Of £210,000

bettermove

Caernarvon Close

Burton-on-Trent

Bettermove are proud to present this 3 bedroom terraced house in Burton-on-Trent.

The property benefits from double glazing, gas central heating throughout and has off street parking available.

The council tax band is B.

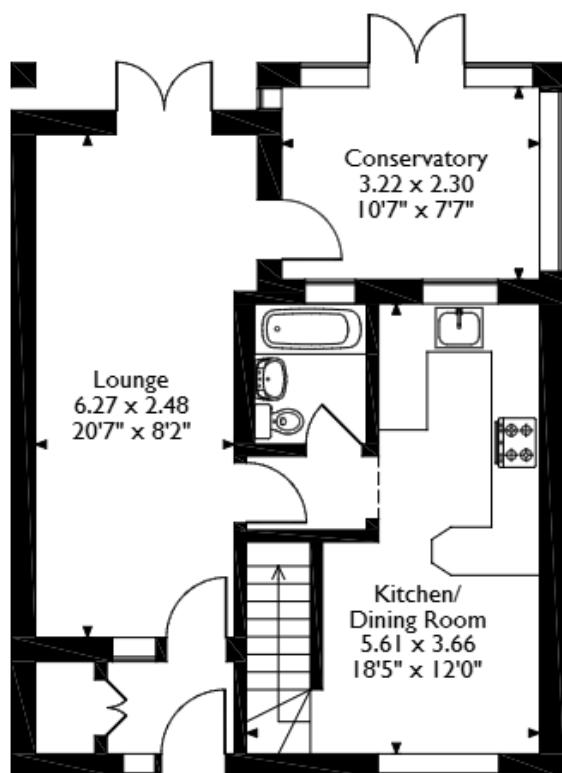
The interior of this property comprises a living room, family bathroom, conservatory and fitted kitchen diner on the ground floor. The first floor consists of 3 bedrooms. The exterior boasts a private rear garden, perfect for enjoying the summer months.

Located in the popular town of Burton-on-Trent, the property is close to a range of amenities, including shops, supermarkets, restaurants and pubs. Excellent transport connections can be found from the A38, A511 and local bus routes.

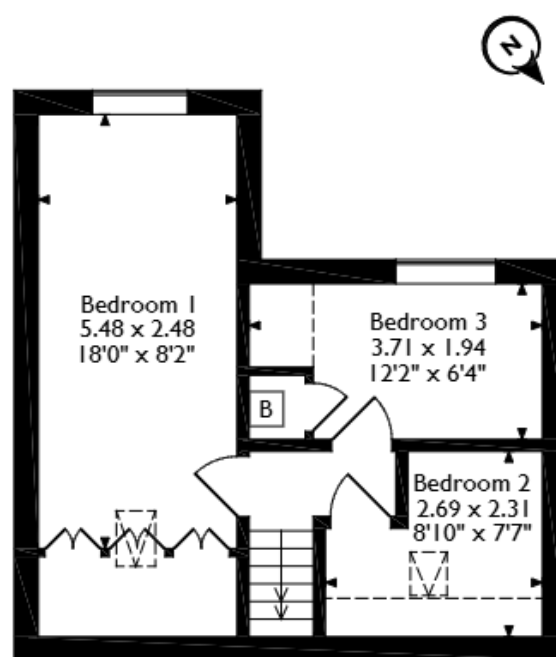
This exciting opportunity should not be missed. All enquiries can be made through Bettermove.



Caernarvon Close, Stretton, Burton-on-Trent, Staffordshire
Approximate Gross Internal Area
82 Sq M/882 Sq Ft



Ground Floor



First Floor

Please note that the location of doors, windows and other items are approximate and this floorplan is to be used for illustrative purposes only. Unauthorized reproduction is prohibited.



20-22 Bridge End, Leeds, LS1 4DJ
t: 0330 004 0050 e: hello@bettermove.co.uk
www.bettermove.co.uk