



GREGORY BROWN
RESIDENTIAL SALES & LETTINGS

£280,000 Share of Freehold
FOR SALE



Rosefield Road, Staines-upon-Thames, Surrey, TW18 4NH

SHARE OF FREEHOLD | WELL PRESENTED & SPACIOUS TWO BEDROOM APARTMENT SITUATED IN THIS SOUGHT AFTER DEVELOPMENT IDEALLY LOCATED WITHIN MOMENTS OF STAINES TOWN CENTRE & MAINLINE TRAIN STATION. The property benefits from a spacious lounge/diner, modern fitted kitchen, two well-proportioned bedrooms, modern white bathroom suite, allocated parking and garage. No Onward Chain. Viewings Highly Recommended!

Gregory Brown

127a, High Street, Staines-upon-Thames, TW18 4PD

01784 451458

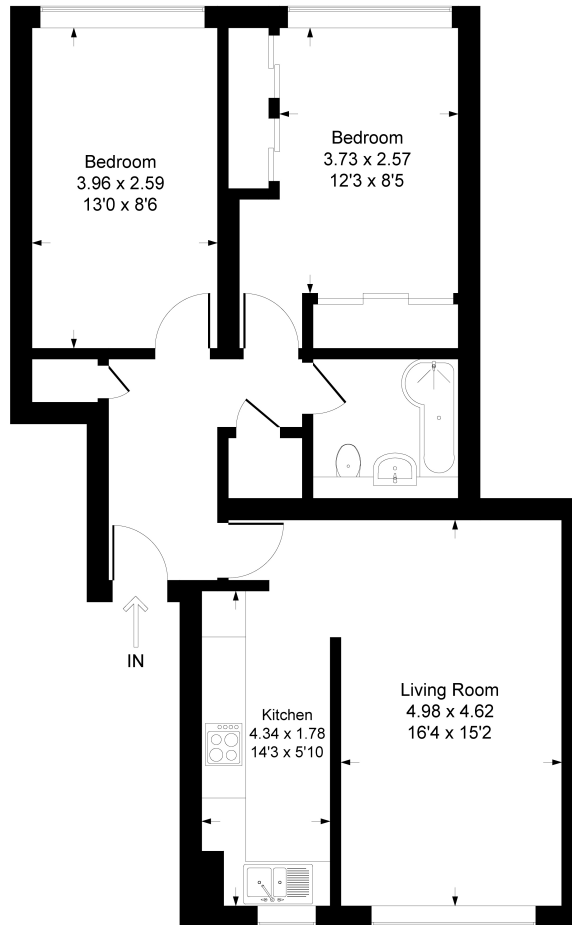
staines@gregory-brown.co.uk

ROOM DESCRIPTIONS

FLOORPLAN

Catherines Court, Staines-Upon-Thames, TW18 4NH

Approximate Gross Internal Area = 69.77 sq m / 751 sq ft



Floor Plan

Illustration for identification purpose only, measurements approximate, and not to scale.

127a, High Street, Staines-upon-Thames, TW18 4PD

01784 451458

staines@gregory-brown.co.uk