



**Bank Street  
Somercotes  
Alfreton  
Derbyshire  
DE55 4JE**

**Offers in Excess of £127,000**

**bettermove**

# Bank Street Alfreton

Bettermove are proud to present this spacious and extended 2 bedroom terraced in the sought after area of Somercotes.

The property benefits from double glazing, gas central heating throughout and has ample on street parking nearby. The council tax band is A.

The interior of this well presented property comprises a spacious living room, dining room, fitted kitchen and conservatory on the ground floor. The first floor consists of 2 bedrooms and the family bathroom. The exterior boasts a private rear garden, perfect for enjoying the summer months.

Located in the popular village of Somercotes, the property is close to a range of amenities, including shops, supermarkets, restaurants and pubs. Excellent transport connections can be found from the M1, the A38 and many local bus routes.

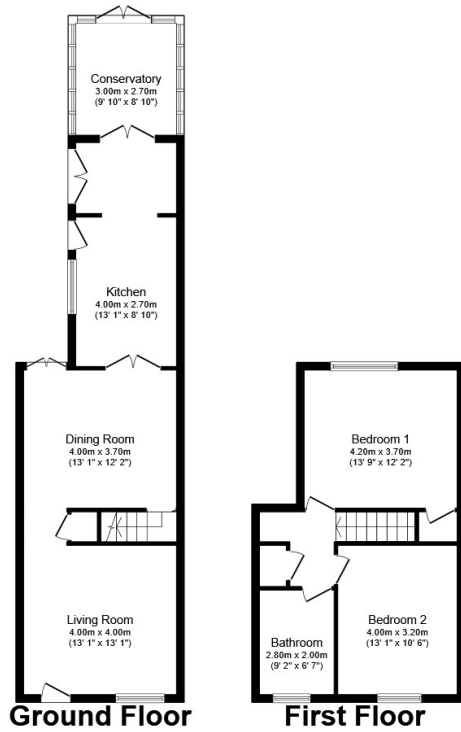
This exciting opportunity should not be missed! All enquiries can be made through Bettermove on 0330 004 0050.

You can secure the purchase today by paying an exclusivity fee of £1,000 which gives you the rights to purchase within a given timeframe.

Paying this fee ensures that the seller takes their property off the market and reserves it exclusively for you, therefore eliminating the risk of gazumping and aborted costs.

The exclusivity fee is returned to you upon successful completion of the property.





Total floor area 102.3 sq.m. (1,101 sq.ft.) approx

This floor plan is for illustrative purposes only. It is not drawn to scale. Any measurements, floor areas (including any total floor area), openings and orientation are approximate. No details are guaranteed, they cannot be relied upon for any purpose and they do not form part of any agreement. No liability is taken for any error, omission or misstatement. A party must rely upon its own inspection(s). Powered by [www.focalagent.com](http://www.focalagent.com)

Energy Efficiency Rating		
	Current	Potential
<i>Very energy efficient - lower running costs</i>		
(92+) <b>A</b>		
(81-91) <b>B</b>		
(69-80) <b>C</b>		80
(55-68) <b>D</b>	58	
(39-54) <b>E</b>		
(21-38) <b>F</b>		
(1-20) <b>G</b>		
<i>Not energy efficient - higher running costs</i>		
<b>England, Scotland &amp; Wales</b>	EU Directive 2002/91/EC	



20-22 Bridge End, Leeds, LS1 4DJ  
t: 0330 004 0050 e: hello@bettermove.co.uk  
[www.bettermove.co.uk](http://www.bettermove.co.uk)