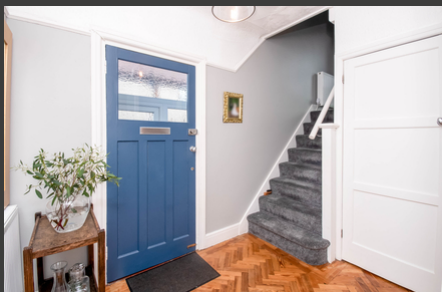


Knowsley Road, Rainhill, £385,000



New to the market is this well-presented three bedroom semi detached family home. A superb traditional semi detached property retaining many of its original features This is the perfect purchase for a growing family, situated in a highly desired area. Close by you have access to local shops, train stations routes and well-regarded schools. This isn't one to be missed.

See more of this house at [ashtons.net](https://www.ashtons.net)

