

FOR SALE

£850,000

Gorse Lane, West Kirby, Wirral. CH48 8BH



Exclusive Bespoke New Build Detached Home! We are delighted to showcase this stunning architect design executive detached family home in an exclusive private location in West Kirby. With generously proportioned accommodation (approx. 2609sqft) briefly comprising four double bedrooms, four bathrooms, impressive living spaces the property will be finished to an exceptional standard with the highest specification of fittings and materials throughout the build. Accessed via a private road off Gorse Lane set in private grounds this unique home is one of only two individual new builds within this secluded plot. Expected to be ready for occupancy Spring 2025!!



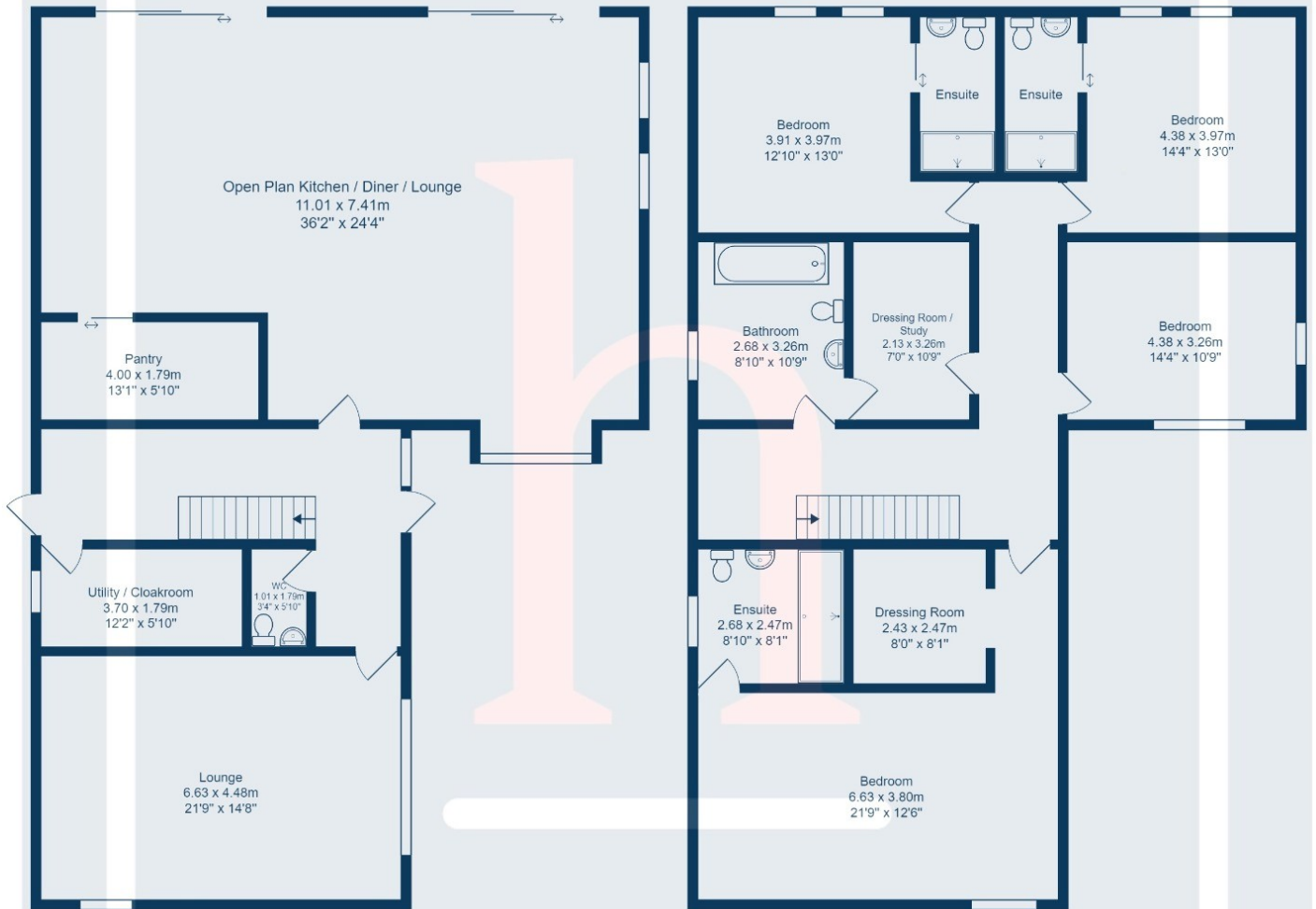






Ground Floor

1st Floor



Total Area: 242.3 m² ... 2609 ft²

All measurements are approximate and for display purposes only.