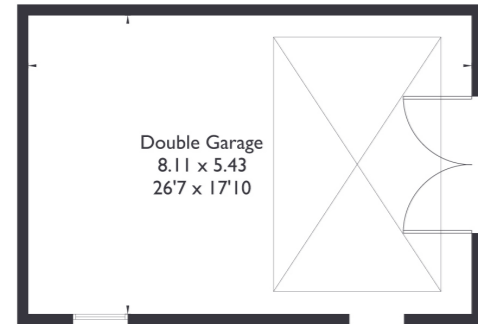
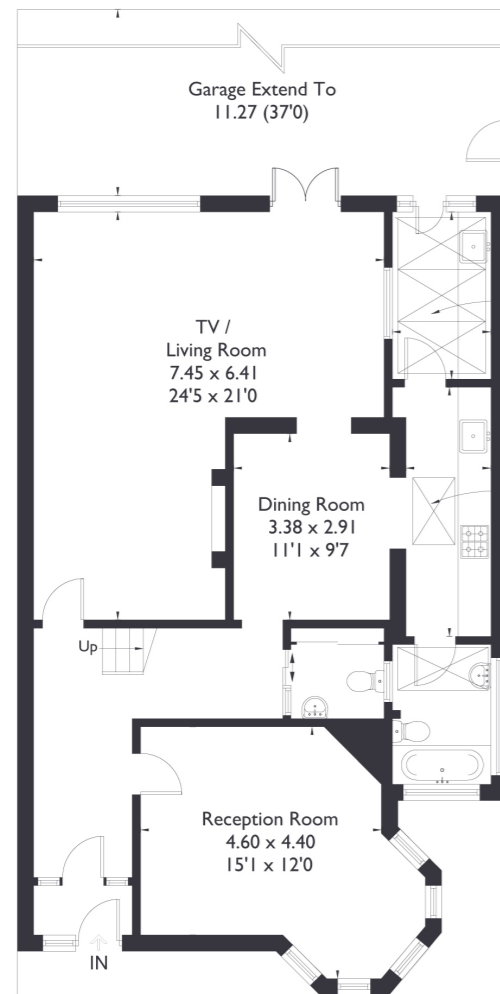


**Gloucester Road, W5**

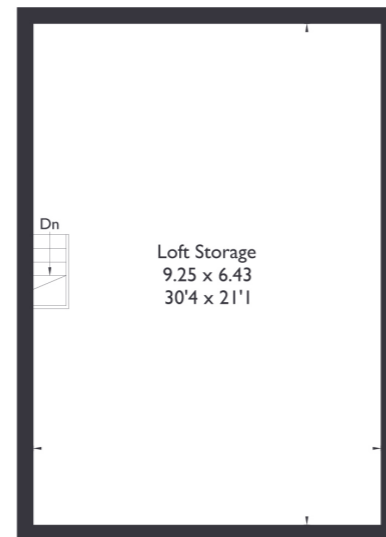
Approximate Floor Area = 169.4 sq m / 1823 sq ft  
Garage = 44.1 sq m / 475 sq ft  
Total = 213.5 sq m / 2298 sq ft (Excluding Loft)



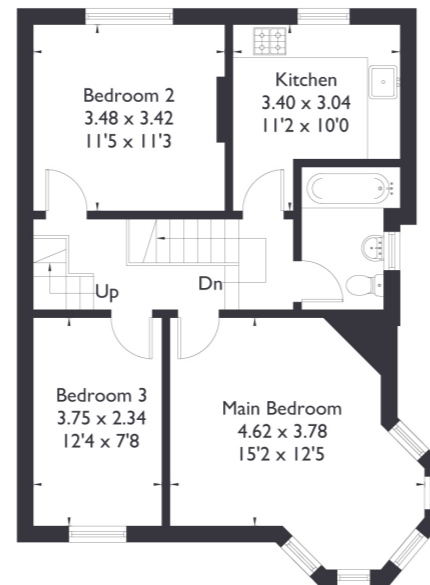
(Not Shown In Actual Location / Orientation)



Ground Floor



Second Floor



First Floor



4 BEDROOM HOUSE

**Gloucester Road, W5**

£1,500,000

Welcome to this wonderful semi detached property, featuring four spacious bedrooms and three bathrooms. The home boasts stunning original features, including high ceilings that allow natural light to flood every room. While the property would benefit from some refurbishment, it offers incredible potential for extension both upstairs and downstairs.

FEATURES

- Chain Free
- Four Bedrooms
- Two Bathrooms/ W/C
- Potential To Extend (STPP)
- Lammas & Walpole Park
- Northfields/South Ealing Station
- EPC Rating TBC



4 BEDROOM HOUSE

## Gloucester Road, W5

The property features large bay windows, and gorgeous sky lights.

Situated in a fantastic location, the property is just a short distance from the beautiful Lammas and Walpole Parks, providing easy access to Ealing Broadway. Additionally, Northfields Station and various local amenities are conveniently close by.

EPC Rating TBC.

