

01992641500

www.christopherstokes.co.uk

10 Newnham Parade, College Road, Cheshunt,
Hertfordshire, EN8 9NU

christopher
stokes



christopher
stokes

Cranleigh Close, Cheshunt, Hertfordshire EN7 6HJ

£265,000 Leasehold

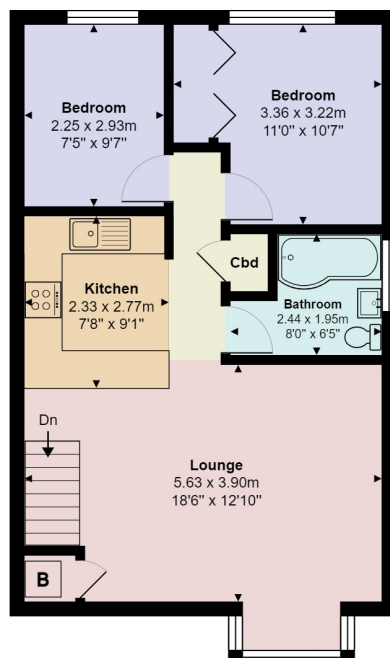
- Two double bedrooms
- 150+ year lease
- Allocated parking
- First floor maisonette
- Large reception area
- Close proximity to schools, shops and other local amenities

150+ year lease, perfect for first time buyers, newly refurbished

Presenting this first floor, two bedroom maisonette in the well sought after town of Cheshunt. Immaculately presented, Cranleigh Close features two double bedrooms, with built in wardrobes to master bedroom and a large reception area. This property also has allocated parking and is within close proximity to schools, shops and other local amenities, perfect for a first time buyer!



These particulars, whilst believed to be accurate are set out as a general outline only for guidance and do not constitute any part of an offer or contract. Intending purchasers should not rely on them as statements or representation of fact, but must satisfy themselves by inspection or otherwise as to their accuracy. We have not carried out a detailed survey nor tested the services, appliances and specific fittings. Room sizes should not be relied upon for carpets and furnishings. The measurements given are approximate. No person in this firms employment has the authority to make or give any representation or warranty in respect of the property.



Cranleigh Close, Cheshunt, EN7 6HJ

Total Area: 54.9 m² ... 591 ft²

All measurements are approximate and for display purposes only