



## Oakmere Close, Potters Bar, EN6 5JQ

£859,950

- SEMI DETACHED FAMILY HOME
- RECENTLY REFURBISHED
- DOWNSTAIRS BEDROOM / STUDY
- QUIET CUL-DE-SAC
- CHAIN FREE
- FOUR / FIVE BEDROOMS
- LOFT BEDROOM WITH EN-SUITE SHOWER ROOM
- EXCELLENT DECORATIVE ORDER THROUGHOUT
- OFF STREET PARKING X 3

# Oakmere Close, Potters Bar, . EN6 5JQ

## £859,950 Freehold

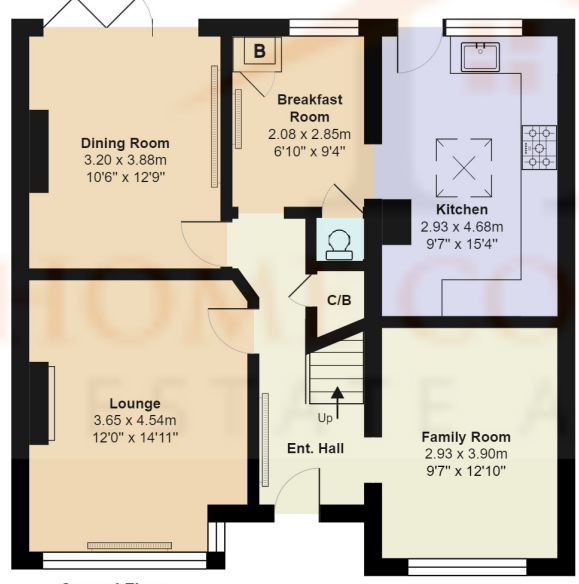
This stunning four bedroom family home is ideally located on this quiet cul-de-sac just moments from Potters Bar High Street with its array of shops and restaurants. The property benefits from Lounge to front, dining room to rear with sliding doors out on to the garden, a downstairs office and recently fitted modern kitchen with integrated appliances, breakfast room and downstairs toilet. The first floor features two large double bedrooms and a single bedroom, and a recently remodelled family bathroom with his and her sinks. The loft has been converted and boasts a large master bedroom with Juliette balcony and shower room.

Externally the property has off street parking for three vehicles and a superb private rear garden with patio area to rear of the house, lawn and patio to the rear.

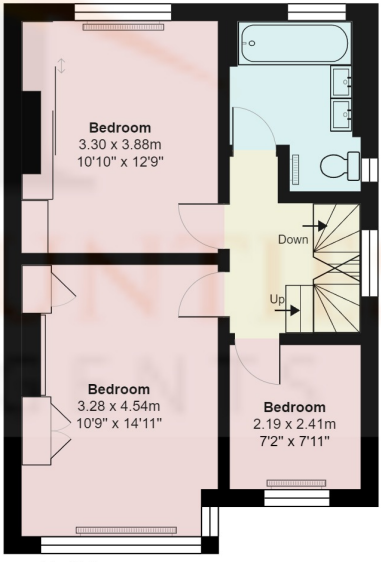
Viewing advised / Chain Free



**Second Floor**  
Area: 28.7 m<sup>2</sup> ... 309 ft<sup>2</sup>



**Ground Floor**  
Area: 74.2 m<sup>2</sup> ... 799 ft<sup>2</sup>



**First Floor**  
Area: 46.5 m<sup>2</sup> ... 501 ft<sup>2</sup>

### Oakmere Close, Hertfordshire EN6

Total Area: 149.4 m<sup>2</sup> ... 1608 ft<sup>2</sup>

All measurements are approximate and for display purposes only

| Energy Efficiency Rating                    |                         |           |
|---|-------------------------|-----------|
|   | Current                 | Potential |
| Very energy efficient - lower running costs |                         |           |
| (92+)                                       | <b>A</b>                |           |
| (81-91)                                     | <b>B</b>                |           |
| (69-80)                                     | <b>C</b>                | <b>74</b> |
| (55-68)                                     | <b>D</b>                |           |
| (39-54)                                     | <b>E</b>                | <b>54</b> |
| (21-38)                                     | <b>F</b>                |           |
| (1-20)                                      | <b>G</b>                |           |
| Not energy efficient - higher running costs |                         |           |
| <b>England, Scotland &amp; Wales</b>        | EU Directive 2002/91/EC |           |

