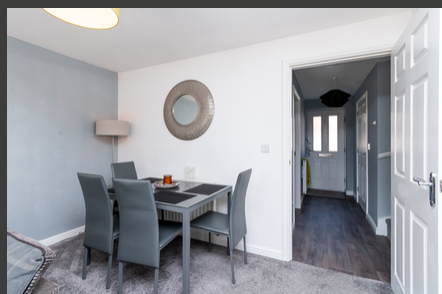


Kiveton Walk, Battersby Lane, WARRINGTON, £220,000



This 3-bedroom semi-detached family home features a modern and contemporary fitted kitchen and bathrooms. It boasts a spacious low maintenance rear garden, perfect for families. Located in a popular and established area, it offers convenient access to Warrington Town Centre and is within walking distance to Warrington Train Stations.
See more of this house at [ashtons.net](https://www.ashtons.net)

