



The Himalayas

Rue Des Marais | Vale |

This detached family home is located in a quiet lane near the west coast with Grandes Rocques and Cobo amenities a comfortable walk away. The property is offered to the market in move-in condition and has excellent social space but would benefit from modernisation in some areas. Accommodation comprises lounge, kitchen/diner, sun lounge, three bedrooms, two bathrooms, a WC and a utility room. There are two areas of outside space, one laid to patio at the side and accessed via the living room and a lawned garden to the rear. The tarmac driveway provides parking for four cars.

£650,000

3 BEDROOMS

2 BATHROOMS

2 RECEPTIONS

PHOTOS



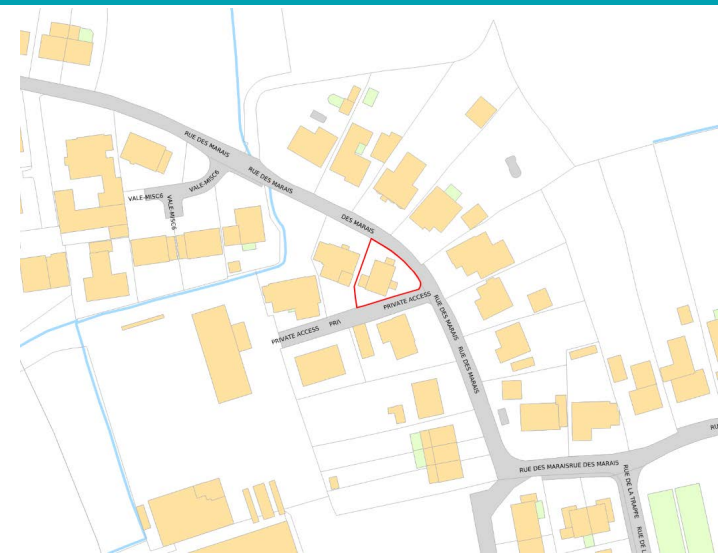
PHOTOS



PHOTOS



SPECIFICATIONS



Entrance Porch
2.05m x 1.24m (6' 9" x 4' 1")

WC
1.91m x 1.25m (6' 3" x 4' 1")

Entrance Hall
5.89m x 1.41m (19' 4" x 4' 8")

Lounge/Diner
5.82m x 3.58m (19' 1" x 11' 9")

Playroom/Study
3.27m x 2.64m (10' 9" x 8' 8")

Kitchen/Diner
5.85m x 4.21m (19' 2" x 13' 10")

Utility Room
1.85m x 1.78m (6' 1" x 5' 10")

First Floor Landing
3.22m x 1.16m (10' 7" x 3' 10")

Master Bedroom
3.56m x 3.37m (11' 8" x 11' 1")

Walk-in Wardrobe
2.14m x 1.41m (7' 0" x 4' 8")

Ensuite
2.02m x 1.83m (6' 8" x 6' 0")

Bedroom 2
3.52m x 3.11m (11' 7" x 10' 2")

Bedroom 3
3.12m x 2.20m (10' 3" x 7' 3")

Bathroom
2.26m x 2.24m (7' 5" x 7' 4")

Garden
To the rear of the property is a low maintenance garden predominantly laid to patio with a lawned area to the side.

Parking
The tarmac driveway provides parking for four vehicles.

PRICE INCLUDES
Curtains, carpets and light fittings.

SPECIAL FEATURES

- Near the west coast
- Spacious accommodation
- Excellent storage
- Quiet area

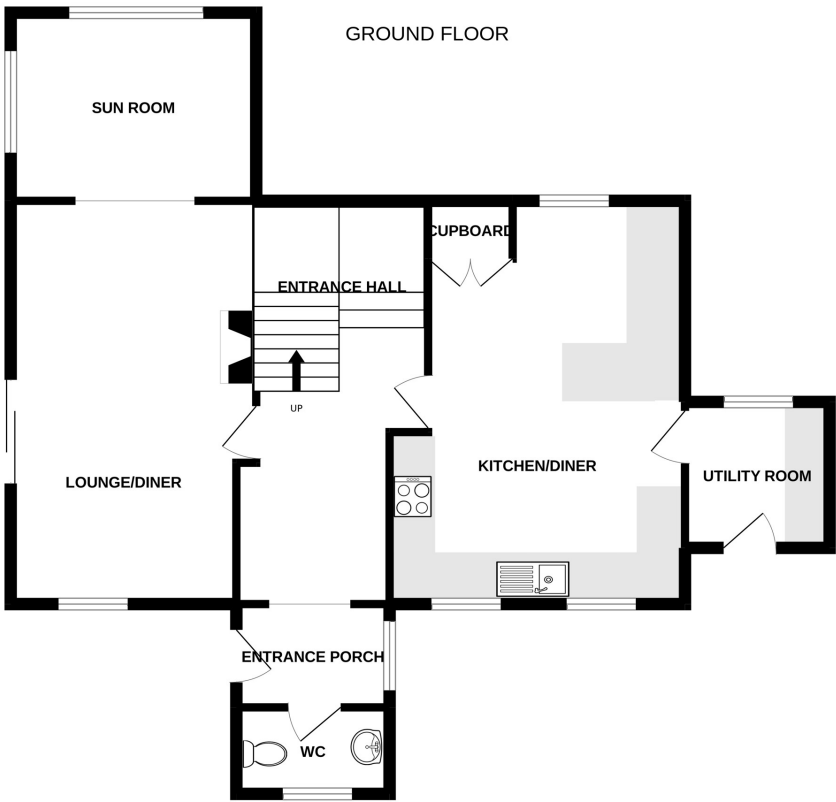
SERVICES
Mains drain. water and electrcity.
Oil fired central heating.

APPLIANCES INCLUDED

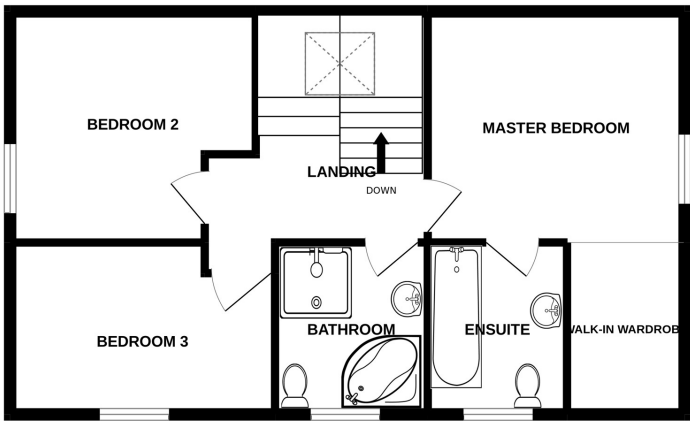
- Indesit washing machine
- Hotpoint double oven
- Extractor fan
- Integrated fridge/freezer
- Hotpoint dishwasher

SCHOOL CATCHMENT

- Mare de Carteret Primary and High School



1ST FLOOR



THE HIMALAYAS

Whilst every attempt has been made to ensure the accuracy of the floorplan contained here, measurements of doors, windows, rooms and any other items are approximate and no responsibility is taken for any error, omission or mis-statement. This plan is for illustrative purposes only and should be used as such by any prospective purchaser. The services, systems and appliances shown have not been tested and no guarantee as to their operability or efficiency can be given.
Made with Metropix ©2022