



# Post Lane, Endon



01782 970222  
[hello@oneagencygroup.co.uk](mailto:hello@oneagencygroup.co.uk)



# Offers in Region of £185,000

A three bedroom semi-detached house in the sought after location of Endon Village. The property requires full modernisation however benefits from a good sized plot, two reception rooms and front and rear garden space. An ideal first time buy or someone looking for an investment. Located walking distance to amenities and excellent schools. Viewing is highly advised. No Chain!





## Ground Floor

### Hall

Entered through the front door, radiator and carpet flooring.

### Reception Room One

3.77m x 3.04m (12' 4" x 10' 0") A window to the front, radiator and carpet flooring.

### Reception Room Two

3.78m x 3.64m (12' 5" x 11' 11") A fireplace and surround, door to the garden, radiator and carpet flooring.

### Kitchen

2.66m x 1.82m (8' 9" x 6' 0") Stainless steel sink basin, space for a cooker, under stairs storage, window to the side and vinyl flooring.

## First Floor

### Bedroom One

3.79m x 3.64m (12' 5" x 11' 11") A window to the rear and radiator.

### Bedroom Two

3.76m x 3.04m (12' 4" x 10' 0") A window to the front, radiator and carpet flooring.

### Bedroom Three

2.82m x 2.13m (9' 3" x 7' 0") A window to the front, radiator and carpet flooring.

### Bathroom

2.64m x 1.80m (8' 8" x 5' 11") A suite with bath and overhead shower, low level W/C, pedestal hand wash basin, airing cupboard with boiler, window and carpet flooring.

## External

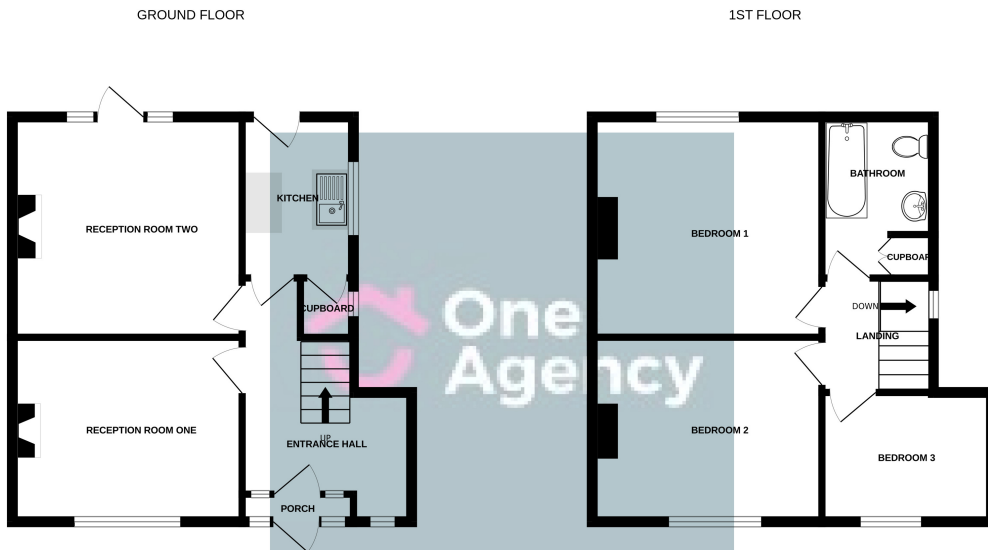
Front - A paved driveway for off road parking and lawned garden with shrubs.

Rear - A paved patio and lawned garden, large storage space and shrub borders.

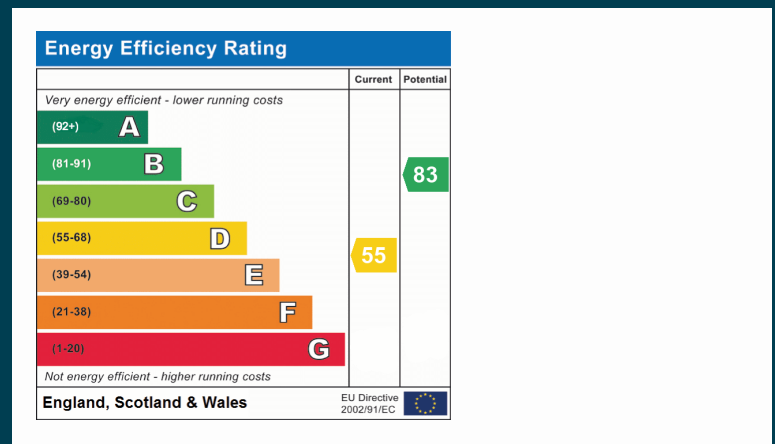
## AGENTS NOTES

The council tax is band C. The local authority is Staffordshire Moorlands.





Whilst every attempt has been made to ensure the accuracy of the floorplan contained here, measurements of doors, windows, rooms and any other items are approximate and no responsibility is taken for any error, omission or mis-statement. This plan is for illustrative purposes only and should be used as such by any prospective purchaser. The services, systems and appliances shown have not been tested and no guarantee as to their operability or efficiency can be given.  
Made with Metropix ©2024



OneAgency, 9 & 10 Ridge House Drive, Festival Park, Stoke-on-Trent, ST1 5SJ

01782 970222

hello@oneagencygroup.co.uk

Every attempt has been made to ensure accuracy, however, all measurements are approximate and for illustrative purposes only. **Not to scale.**  
In accordance with The Consumer Protection from Unfair Trading Regulations 2008 the following particulars have been prepared in good faith and they are not intended to constitute part of an offer or contract. We have not carried out a structural survey and the services, appliances and specific fittings have not been tested. All photographs, measurements, floor plans and distances referred to are given as a guide only and should not be relied upon for the purchase of carpets or any other fixtures and fittings. Lease details, service charges and ground rent (where applicable) are given as a guide only and should be checked and confirmed by your Solicitor prior to exchange of contracts.