



Milestone Road, Hitchin, Hertfordshire. SG5 2SZ





2 Bedroom Apartment

Guide Price £250,000

Share of Freehold

Located on the outskirts of Hitchin, this well-present first floor apartment that is offered to the market CHAIN FREE!

The spacious accommodation has a contemporary feel with a large open plan kitchen/living room. The kitchen area benefitting from integrated eye and base level appliances. There are also two double bedrooms and a white three piece bathroom. Further benefits include a private garden, double glazing, an allocated parking space and no road restrictions. A fantastic apartment that must be viewed.

- Beautifully present first floor apartment
- Light and airy living/dining area
- Two Double bedrooms
- Contemporary open plan kitchen/living room
- Private garden
- Allocated parking space
- Must be viewed
- Double glazing
- Chain Free
- EPC rating-C Council tax band B

First Floor

Front Door:

Composite double glazed front door.

Entrance:

Entrance hall, stairs to first floor. Carpet as fitted.

Lounge/Kitchen

Abt. 17' 8" x 11' 08" (3.56m x 5.39m) An open plan Lounge/Kitchen comprising two Double glazed window to the front. Carpet as fitted. TV point. Contemporary vertical radiator. Loft access. A modern fitted kitchen comprising a good range of eye and base level 'High Gloss' units with ample worktops. Single drainer stainless steel sink unit. Built-in induction hob, eye level double electric oven and extractor hood. Integrated dishwasher and fridge/freezer. Plumbing for automatic washing machine. Wall mounted gas boiler. Part tiled walls. Double glazed window to side. Inset ceiling lights. Amtico flooring.

Bathroom:

A white three piece suite comprising a 'P' shaped shower bath with mixer tap, rainfall shower over and glass screen, vanity unit with inset wash hand basin and low level WC. Part tiled walls. Extractor fan. Heated towel rail. Inset ceiling lights. Tiled flooring.

Bedroom One:

Abt. 9' 10" x 11' 03" (2.99 X 3.42m) A light and airy bedroom. Television point. Radiator. Carpet as fitted. Double glazed window to the rear.

Bedroom Two:

Abt. 7' 11" x 12' 03" (4.67m x 1.30m) Double glazed window to rear. Television point. Contemporary vertical radiator. Carpet as fitted.

Outside Garden:

A private and enclosed rear garden with a paved patio area and lawn. Gated side access. Storage cupboard.

Front:

A block paved frontage provides off road parking.

Agents Note:

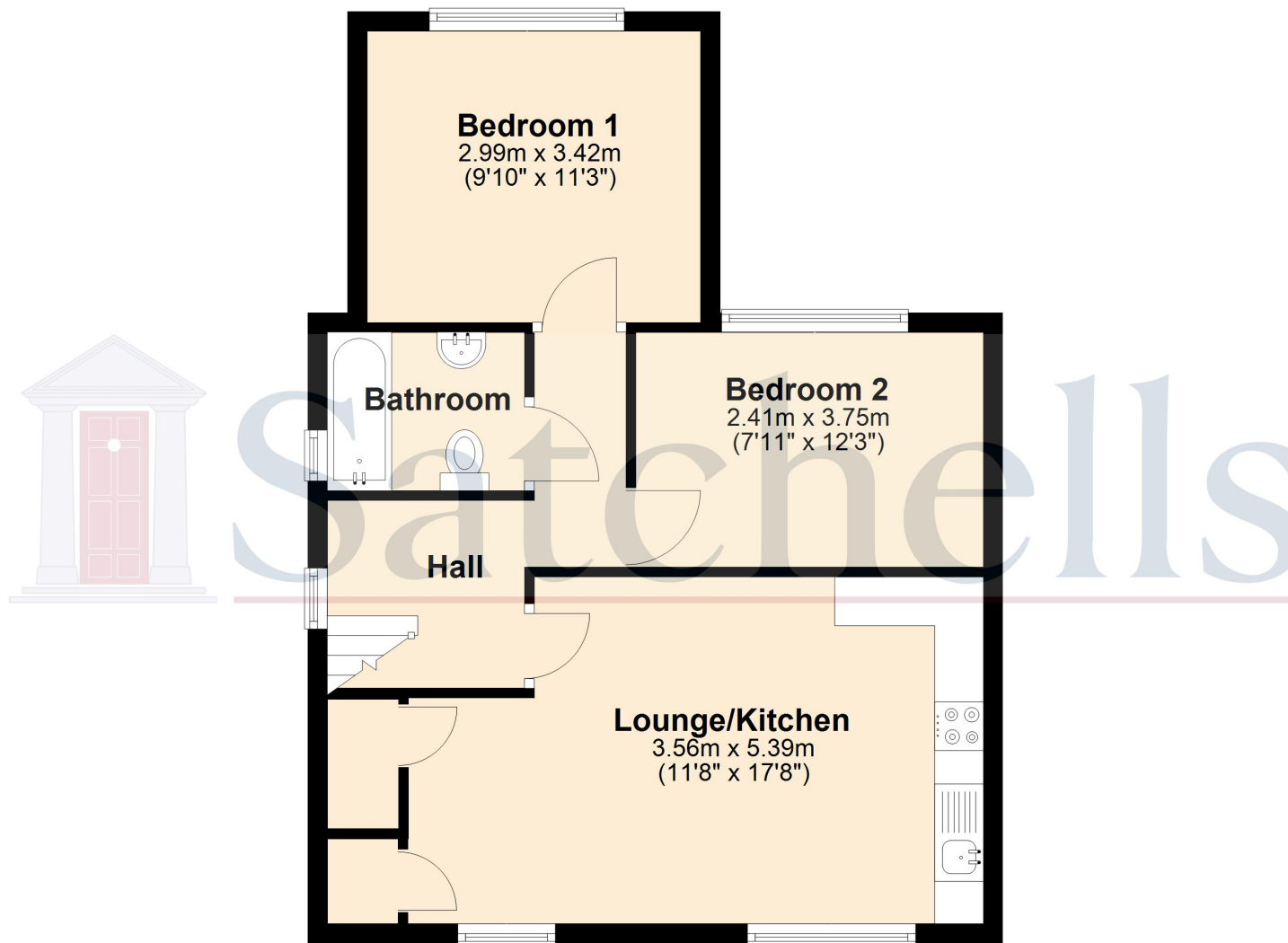
Draft particulars yet to be approved by vendor and may be subject to change.





These particulars are a guide only and do not constitute an offer or a contract. The floor plan is for identification purposes only and not to scale. All measurements are approximate and should not be relied upon if ordering furniture, white goods and flooring etc. We have presented the property as we feel fairly describes it but before arranging a viewing or deciding to buy, should there be anything specific you would like to know about the property please enquire. Satchells have not tested any of the appliances or carried out any form of survey and advise you to carry out your own investigations on the state, condition, structure, services, title, tenure, and council tax band of the property. Some images may have been enhanced and the contents shown may not be included in the sale. Satchells routinely refer to 3rd party services for which we receive an income from their fee. If you would like us to refer you to one of these services please ask one of our staff who will pass your details on. We advise you check the availability of the property on the day of your viewing.

First Floor



For illustration purposes only - NOT TO SCALE - Measurements shown are approximate. The size and position of doors, windows, appliances and other features are approximate.
Plan produced using PlanUp.