

9 Whittle Court,
Knowlhill, Milton Keynes, MK5 8FT

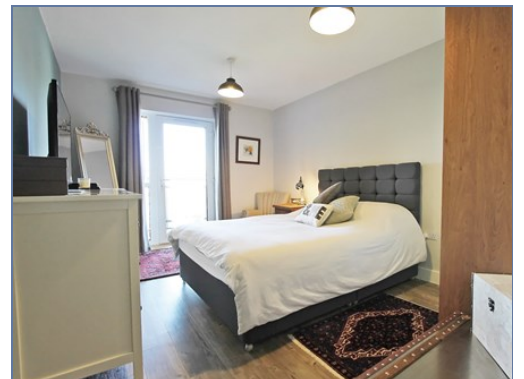
Tel: 01908 231 551
mail@elevationstateagents.com



**Bessemer Lodge, Flat 19 15 Ada Walk,
Oakgrove, Milton Keynes,
Buckinghamshire, MK10 9SW**

£1,150 pcm Freehold

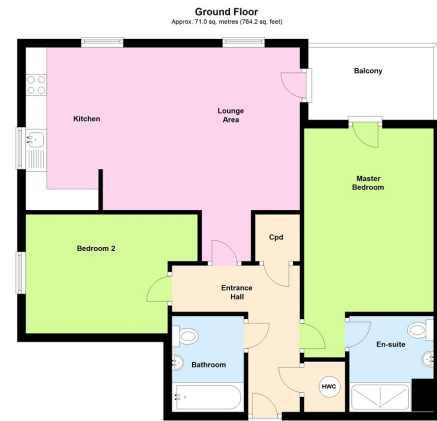
- Two bedroom
- Desirable location
- Beautiful views
- Good school catchment
- Open Plan Living
- Energy rating B
- NO APPLICATION FEE - SAVE £350
- EPC Rating TBC





Disclaimer

Whilst we have endeavoured to prepare our sales particulars accurately none of the services, appliances or equipment have been tested. A buyer should satisfy themselves on such matters prior to purchase. Any measurements or distances mentioned in these particulars are for guide reference only. If such particulars are fundamental to a purchase, buyers should rely on their own enquiries. All enquiries should be directed to Elevation Estate Agents in the first instance.



Total area: approx. 71.0 sq. metres (764.2 sq. feet)

Floor Plans are for layout purposes only.
Plan produced using PlanUp.

