

**2 Bedroom(s), Semi-Detached Bungalow, To be Advised**

**Tranmoor Avenue, Cantley, Doncaster.**



- 3D Virtual Tour Available
- Two Bedroom Semi Detached Bungalow
- Kitchen and Separate Utility Room
- Bathroom
- Rear Enclosed Garden

- No Chain
- Great Potential
- Lounge
- Garage and driveway
- Popular Location with Local Amenities and Transport Links

**£165,000**  
**For Sale**

*Book your viewing today* Tel: 01302 247754

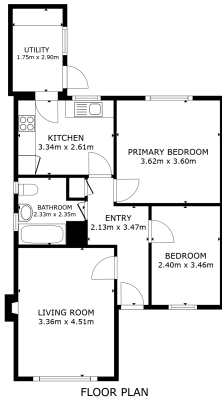


## Owner's View

Welcome to this two-bedroom semi-detached bungalow on the sought-after Tranmoor Avenue in Bessacarr, Doncaster – offered with no chain and fantastic potential throughout. The property features a well-proportioned lounge, a kitchen with access to a separate utility area, two bedrooms, and a bathroom. Externally, there is a driveway providing off-road parking, a garage, and a rear enclosed garden offering plenty of opportunity to create your ideal outdoor space. Situated in a desirable residential area close to local amenities, transport links, and green spaces, this bungalow is an excellent opportunity for buyers looking to put their own stamp on a home. Ideal for downsizers, first-time buyers, or investors.

## Ground Floor

### Floor Plan



GROSS INTERNAL AREA  
FLOOR PLAN 46.3 sq ft  
TOTAL: 64.5 sq ft  
SIZES AND DIMENSIONS ARE APPROXIMATE, ACTUAL MAY VARY



Lounge



## Kitchen





## Utility



## Bedroom



## Bedroom



## Bathroom



## Externals

### Front Aspect



### Rear Garden



## Property Information

Council Tax Band - B

Utilities - Mains Gas, Mains Electricity, Mains Water

Water Meter -

Tenure -

Solar Panels -

Space Heating System -



Approximate Heating System Installation Date -

Water Heating System -

Approximate Water Heating Installation Date -

Boiler Location -

Approximate Electrical System Installation Date -

Permanent Loft Ladder -

Loft Insulation -

Loft Boarded out –

Whilst every effort is made to ensure that the information contained in these particulars is reliable, they do not constitute or form part of an offer or any contract. The Property Hive accept no liability for the accuracy of the contents, and therefore they should be independently verified by prospective buyers or tenants before agreeing an offer. All measurements provided are approximate and should be verified before exchange of contracts. No appliances, fixtures or fittings have been tested and should be checked by the buyer before exchange of contracts to ensure they are in good working order.





*We make it happen.*

Tel: 01302 247754

Email: [info@thepropertyhive.co.uk](mailto:info@thepropertyhive.co.uk)

Web: [www.thepropertyhive.co.uk](http://www.thepropertyhive.co.uk)

## Energy Performance Certificate