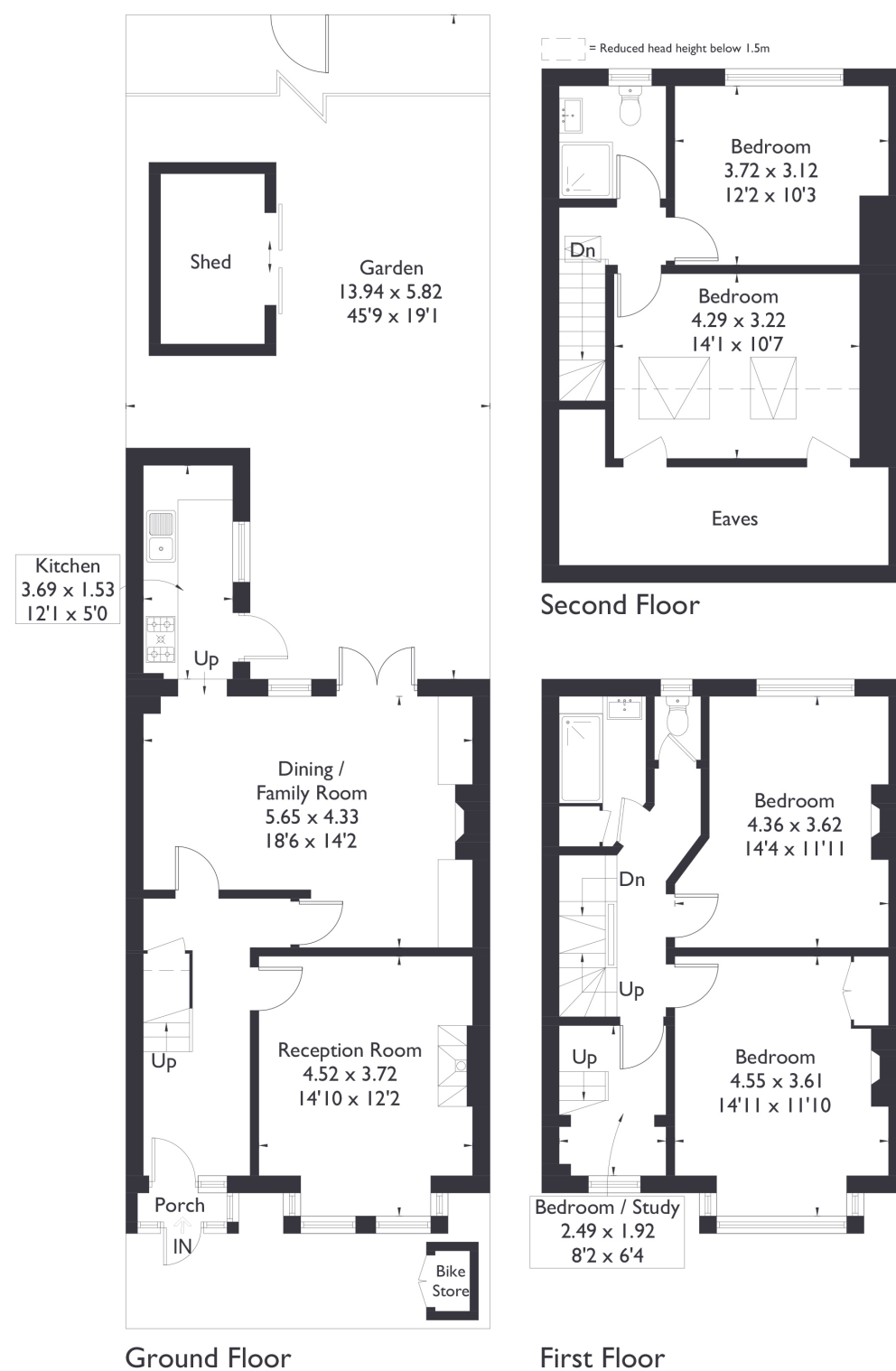


Mervyn Road, W13

Approximate Floor Area = 138.9 sq m / 1495 sq ft
(Excluding Eaves / Shed / Bike Store)



5 BEDROOM HOUSE

Mervyn Road, W13

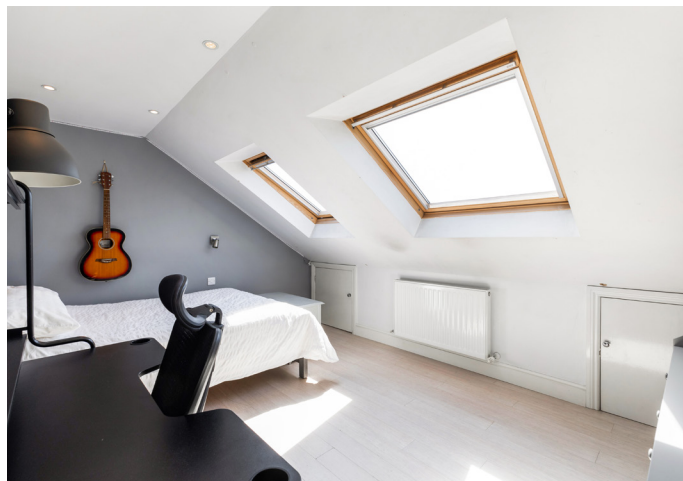
£1,100,000

Welcome to this gorgeous five bedroom, two bathroom terraced home in the heart of Northfields.

Perfectly positioned just moments from the vibrant Northfields Avenue, this beautifully proportioned property offers an ideal blend of space, character, and convenience. Upon entering, you're welcomed by a bright reception room to your right, featuring elegant bay windows and high ceilings that enhance the sense of space and light. Towards the rear of the property, you'll find a galley kitchen and a separate living/dining area that opens seamlessly onto a delightful garden—perfect for entertaining or relaxing in the sun. The kitchen, thoughtfully positioned in the side return, offers generous storage and functionality.

FEATURES

- Five Bedrooms
- Two Bathrooms
- Large Reception Rooms
- Fielding Primary School Catchment And Elthorne Park High School Catchment
- Northfields Station/ Boston Manor Station
- Elthorne Park Nearby
- EPC Rating D



5 BEDROOM HOUSE

Mervyn Road, W13

The first floor hosts two well-sized double bedrooms and a single bedroom, all flooded with natural light, along with a family bathroom and separate W/C.

On the top floor, you'll find two further double bedrooms and a modern shower room, providing excellent flexibility for growing families or home office needs. Set just moments from Elthorne Park enjoying scenic canal-side walks and situated within the catchment of the highly sought-after Fielding Primary School, this home also benefits from close proximity to both Boston Manor and Northfields stations and a range of local shops, cafés, and amenities.

A rare opportunity in a prime location, this property offers the perfect lifestyle for families and professionals alike.

EPC Rating D.

