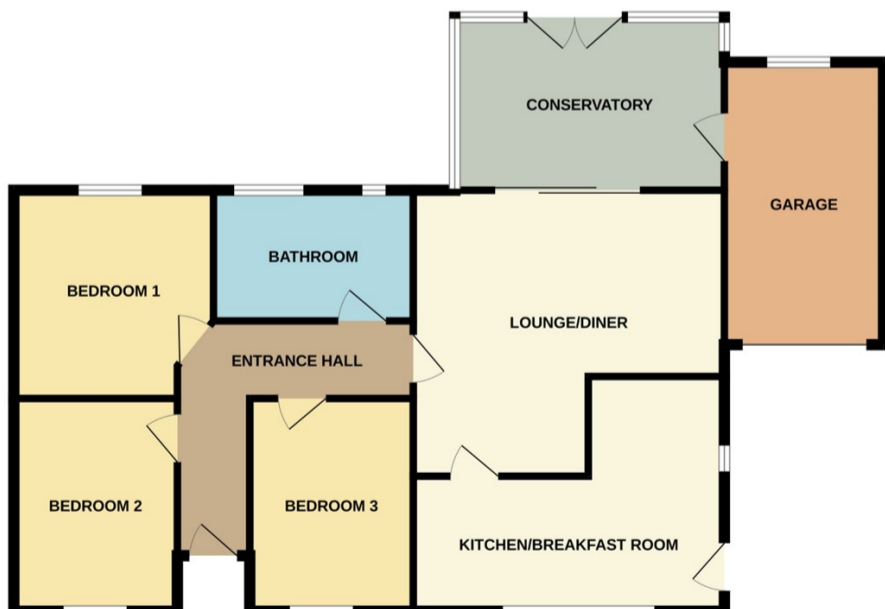




Bourne

£355,000



*****IMMACULATELY PRESENTED DETACHED BUNGALOW***** Rosedale are delighted to offer this beautifully updated property located in a very popular cul-de-sac, approximately half a mile from Bourne town centre. This detached bungalow has been tastefully decorated throughout with a refitted modern style kitchen breakfast room, a spacious lounge and conservatory, three bedrooms and a four piece bathroom suite. The oversized garden has been extremely well kept to include patio area, manicured lawn and borders and is fully enclosed. There is also a front garden with a brick block driveway leading to a single garage. To fully appreciate this property, viewings are highly recommended. EPC Energy Rating currently unavailable. Council Tax Band C.