



## 28 Glendale, Leven, Fife, KY8 5BG

Light and Spacious, Two-Bedroom, Main-Door, Ground-Floor Flat

Up to date price and viewing info at [mov8realestate.com/property](https://mov8realestate.com/property)

espc rightmove<sup>®</sup> Zoopla  
find your happy



# Property Description

Light and spacious, two-bedroom, main-door, ground-floor flat.

Set in a popular, residential area of the seaside town of Leven in Fife.

Comprises an entrance hallway, a living room, a dining/kitchen, two double bedrooms and a bathroom.

Highlights light, neutral decor throughout, a fitted kitchen and a modern bathroom. In addition, there is double glazing, gas central heating and excellent storage provision, including integrated wardrobes.

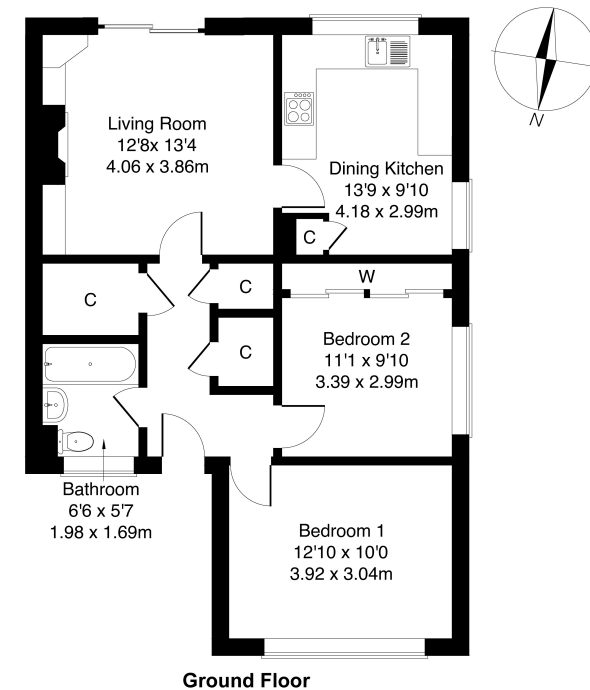
Further features include low-maintenance, private, enclosed gardens, including a south-facing rear garden.

A welcoming entrance hall, with generous storage, is finished with neutral decor and wood-effect flooring, which continue into a living room, set to the rear of the property. The spacious reception room includes a feature, stone-built fireplace and opens onto the rear garden, via glazed, sliding doors. Conveniently accessed from the living room, and enjoying the same, sunny aspect, a kitchen provides ample space for seated dining. Including built-in storage, the kitchen is fitted with wood-effect units, an integrated oven, a gas hob and an overhead extractor, whilst plumbing and space are available for additional appliances.

Two double bedrooms are well-proportioned and carpeted for comfort, with one further benefiting from integrated, wardrobe storage.

Completing the accommodation, a family bathroom comprises a three-piece suite, a shower-over-bath and panel, splash walls.

**mov<sup>8</sup> 28 Glendale**  
REAL ESTATE  
Estate Agents and Solicitors  
Approximate Gross Internal Area: (710 sq ft - 66 sq m.)



Legal Disclaimer : Floor-plan and measurements are for illustrative guidance only, and not intended to form part of any contract.

## Area Description

Leven is a popular seaside town in Fife, located between the picturesque fishing villages of the east Neuk and the main towns of Kirkcaldy and Glenrothes. The High Street and the Riverside Retail Park provide a wide range of major stores and supermarkets and boast many local, specialist shops. Leven is an excellent lifestyle choice for outdoor activities, with scenic Letham Glen and Silverburn Park offering attractive landscaped and picnic areas. Forming part of the Fife Coastal Path, Leven Beach, with its picturesque promenade, is perfect for outdoor recreation. Scoonie and Leven Links Golf courses are enjoyed by golfers at all levels, whilst St Andrews, the renowned the Home of Golf is within

an hour's drive. A good range of schooling is available, including three well-regarded primary schools, with secondary education provided at Levenmouth Academy. For commuters, Edinburgh and Dundee are easily accessible via the A92 or by rail from Markinch railway station (6 miles). The town itself will welcome a new railway station in 2024.









## Our Services

-  Free pre-sale property valuations
-  Great value fixed estate agency fees
-  Extensive buyer matching database
-  Purchase and sale conveyancing

## Contact Us

0345 646 0208

[sales@mov8realestate.com](mailto:sales@mov8realestate.com)

[www.mov8.com](http://www.mov8.com)

### Head Office

6 Redheughs Rigg, Edinburgh, EH12 9DQ

### Glasgow Office

77 Renfrew Street, Glasgow, G2 3BZ



Estate Agents and Solicitors



These particulars do not form part of any contract and the statements or plans contained herein are not warranted nor are they to scale. All descriptions, dimensions, areas, reference to condition and necessary permissions for use and occupation and other details are given in good faith, and are believed to be correct, but any prospective purchaser should not rely on them as statements or representations of fact, and any prospective purchaser must satisfy themselves by inspection or otherwise as to the correctness of each of them. The Seller shall not be bound to accept the highest or any offer nor to accept a full offer of the Fixed Price where this is applicable. Approximate measurements have been taken by sonic device and measurements are most often taken to the widest point of any room or space. Services and appliances have not been tested for efficiency or safety and no warranty is given as to their compliance with any Regulations. Offers should be made using the Combined Standard Clauses.