



**Turnham Drive  
Leighton Buzzard  
Bedfordshire  
LU7 4RS**

**Offers In Excess Of £352,000**

**bettermove**

# Turnham Drive Leighton Buzzard

Bettermove are proud to present this 4 bedroom terraced house in Leighton Buzzard available with no forward chain.

The property is currently tenanted and rental yields can be obtained through Bettermove.

The property benefits from double glazing, gas central heating throughout and has off street parking available via the 2 allocated parking spaces.

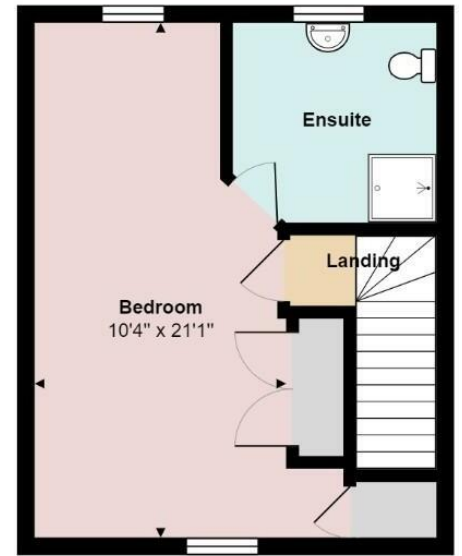
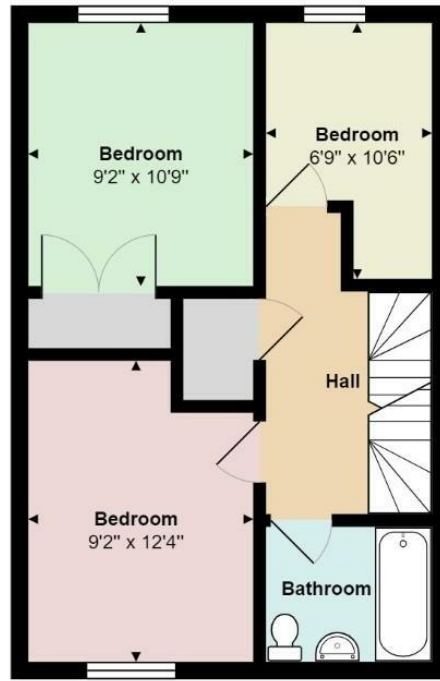
The council tax band is D.

The interior of this beautifully presented property comprises a spacious living room, w/c and fitted kitchen on the ground floor. The first floor consists of 3 bedrooms and the family bathroom. The second floor holds the master bedroom and en-suite. The exterior boasts a private rear garden, perfect for enjoying the summer months.

Located in the popular town of Leighton Buzzard, the property is close to a range of amenities, including shops, supermarkets, restaurants and pubs. Excellent transport connections can be found from the A505 and local bus routes.

This exciting opportunity should not be missed! All enquiries can be made through Bettermove on 330 004 0050.





Total Area: 1221 ft<sup>2</sup>

All measurements are approximate and for display purposes only



20-22 Bridge End, Leeds, LS1 4DJ  
t: 0330 004 0050 e: hello@bettermove.co.uk  
[www.bettermove.co.uk](http://www.bettermove.co.uk)