



Worplesdon Road, Guildford, Surrey. GU2 9UR

- No Onward Chain
- Retirement Flat
- Over 60's Only
- Double Bedroom
- Well Maintained
- Communal Facilities
- In House Warden
- Parking
- Convenient Location
- Ground Floor



PROPERTY DESCRIPTION

Situated in the ever popular Francis Court development this well maintained ground floor retirement flat for the over 60's comes to the market offering a fitted kitchen, double bedroom and bathroom. Further benefits include emergency pull cords, on site manager, communal laundry room, communal lounge and well maintained grounds. Local amenities are nearby as are bus routes into Guildford Town center but to fully appreciate the accommodation viewings are highly recommended. NO ONWARD CHAIN.



ROOM DESCRIPTIONS

Ground Floor

Communal Entrance Hall

Stairs and lift to upper floors

Entrance Hall

Cupboard, doors to;

Lounge

Front aspect double glazed window, storage heater, emergency pull cord, open to:

Kitchen

Range of eye and base level units, space for appliances, roll top surfaces.

Bedroom

Front aspect double glazed window, storage heater, emergency pull cord, fitted wardrobe

Bathroom

Tiled walls, low level w.c, wash hand basin, panel enclosed bath,

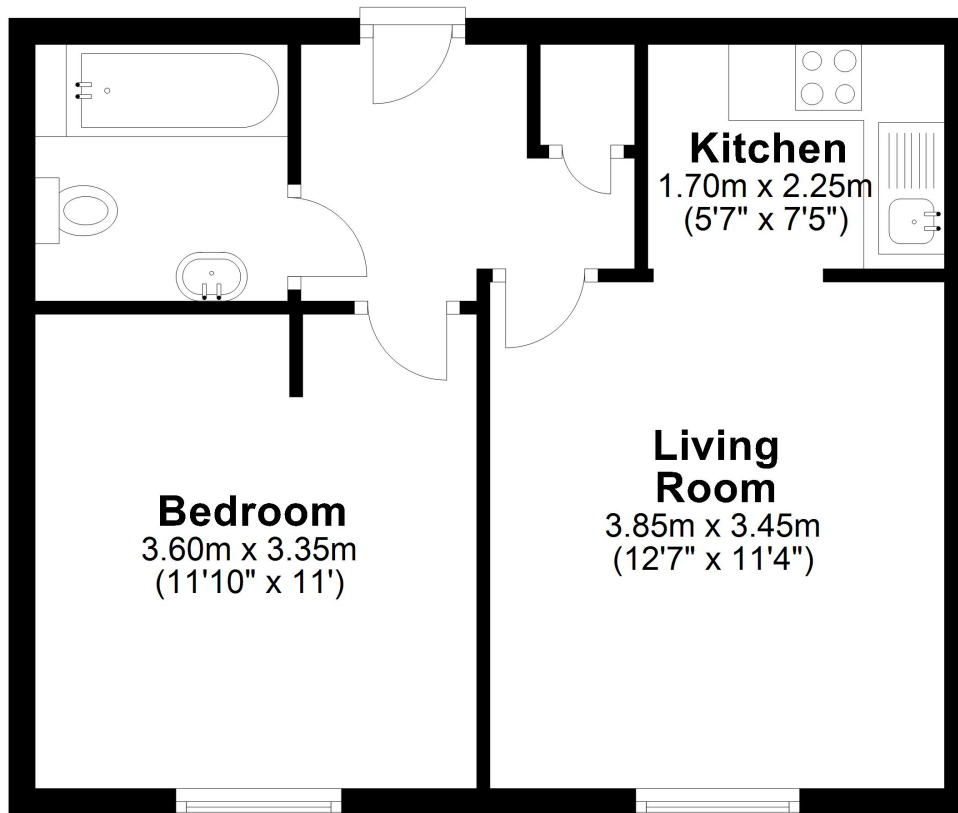


FLOORPLAN



Ground Floor

Approx. 39.0 sq. metres (419.4 sq. feet)



Total area: approx. 39.0 sq. metres (419.4 sq. feet)