



13 High Street, Meppershall, Shefford, Bedfordshire, SG17 5LS

Freehold Offers in Excess of £315,000







Step Inside

High Street




Satchells

About Letchworth

High Street

Frosted front door leading to internal hallway.




Satchells





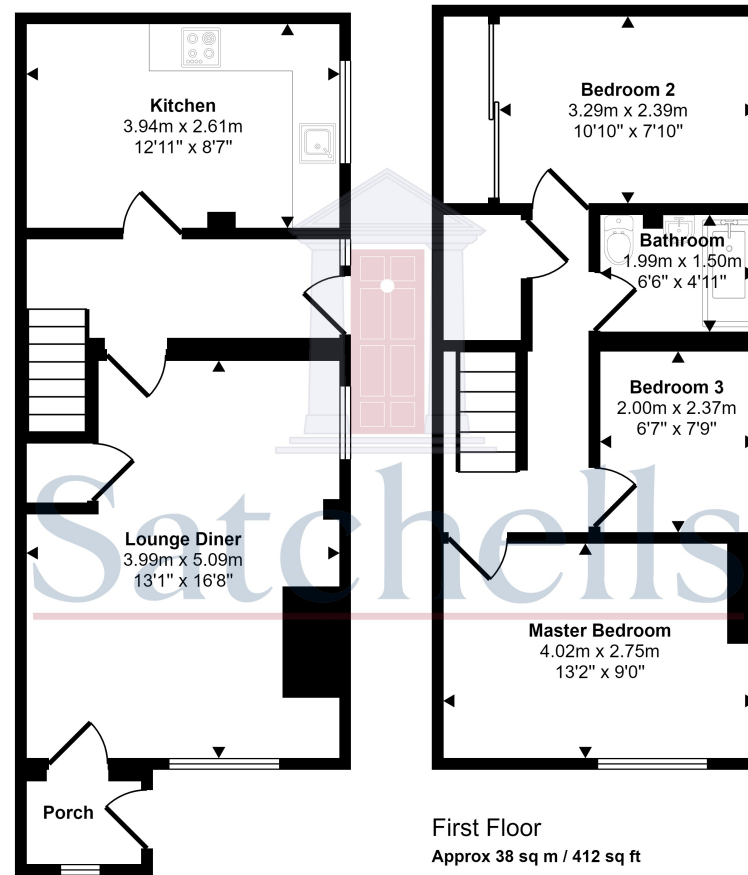
Step Outside

High Street

Doors to all rooms. Stairs to first floor. Wood flooring.



Approx Gross Internal Area
78 sq m / 835 sq ft



Ground Floor
Approx 39 sq m / 423 sq ft

This floorplan is only for illustrative purposes and is not to scale. Measurements of rooms, doors, windows, and any items are approximate and no responsibility is taken for any error, omission or mis-statement. Icons of items such as bathroom suites are representations only and may not look like the real items. Made with Made Snappy 360.



Satchells
18-20, High Street, Shefford, Bedfordshire, SG17 5DG
Tel: 01462 813235
E: shefford@satchells.co.uk <https://www.satchells.com/>

