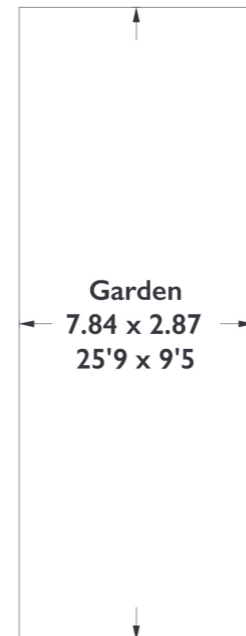
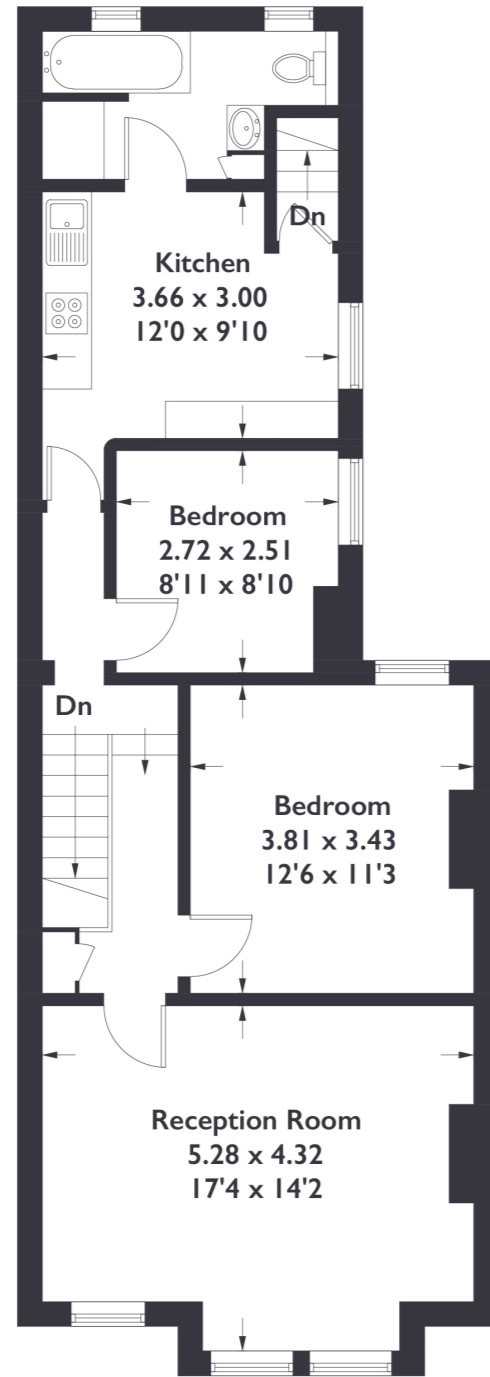
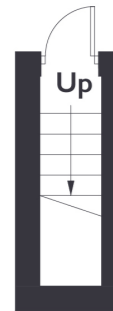


Westfield Road, W13

Approximate Gross Internal Area = 76.4 sq m / 823 sq ft



Ground Floor

First Floor

Measured in accordance with RICS Code of Measuring Practice. To be used for identification and guidance purposes only. Whilst every care is taken in the preparation of this plan, please check all dimensions, shapes and compass bearings before making any decisions reliant upon them.



2 BEDROOM FLAT

Westfield Road, W13

£550,000

This generously sized two bedroom flat is presented to an excellent standard, fit with bright spaces, a recently landscaped, low maintenance private garden and positioned just a stones throw away from a variety of schools, transport options and amenities.

FEATURES

- Share Of Freehold
- Two Bedrooms
- Landscaped Private Garden
- First Floor Edwardian Property
- Oaklands Primary School
- Elthorne Park High School
- Northfields Station (Piccadilly Line)
- West Ealing Station (Elizabeth Line)



2 BEDROOM FLAT

Westfield Road, W13

£550,000

Located on the first floor of this Edwardian property, you are welcomed into a spacious hallway with high ceilings.

The kitchen is bright and complimented by a plethora of storage options and with the handy addition of built in speakers. Both bedrooms are generously sized with the master bedroom including stylish fitted wardrobes. Leading through to the reception room you'll find a large bay window and plenty of natural light. The space is beautifully presented and looks out onto the quiet, residential Westfield Road. The recently landscaped garden is a huge bonus to the property, with an easily maintained surface and rear access. A large three piece bathroom completes the property.

Westfield Road offers convenient access into West Ealing, Ealing Broadway and Northfields. Being a short walk away from the new Elizabeth Line at West Ealing Station you'll find a fantastic range of shops, restaurants and cafes on your doorstep. The location finds itself ideal for families when it comes to local schools as both Oaklands Primary School and Ethorne Park High School are a stones throw away.

