



T: 01909 509001  
E: [info@bartropanddilks.co.uk](mailto:info@bartropanddilks.co.uk)  
W: [www.bartropanddilks.co.uk](http://www.bartropanddilks.co.uk)  
A: 78 Bridge Street, Worksop, S80 1JA

FOR SALE

£245,000

10 Meade Drive, Worksop, Nottinghamshire. S81 0PD



Offered for sale with no chain involved with professional pictures due shortly is this three bedroom detached bungalow that has gas central heating and uPVC double glazed windows. Being set within this highly sought after area and in a cul de sac location, the property offers well laid out accommodation and fully requires an internal inspection. In brief comprises of; side entrance hallway, rear lounge/dining room, kitchen with a range of fitted units, three bedrooms, bedroom one with mirror fronted wardrobes and bathroom. Outside; gardens to the front and rear, driveway and garage. Viewing advised.



## Accommodation

### Side Entrance Hallway

Entrance via a storm porch, entrance door, double storage cupboard, loft access.

### Lounge/Dining Room 7.11m x 7.10m (23' 4" x 23' 4")

Being L shaped and to the rear with fire surround and gas fire, two rear facing windows, two central heating radiators.

### Kitchen 3.13m x 2.91m (10' 3" x 9' 7")

With a good range of fitted wall and base units, worksurfaces, sink unit, electric hob and oven, plumbing for an automatic washing machine, cylinder airing cupboard, enclosed gas fired central heating boiler, side window and door.

### Bedroom One 4.30m x 3.30m (14' 1" x 10' 10")

With mirror fronted wardrobes to majority of one wall, front facing window, central heating radiator.

### Bedroom Two 3.66m x 3.18m (12' 0" x 10' 5")

With a front facing window, central heating radiator.

### Bedroom Three 3.03m x 2.66m (9' 11" x 8' 9")

With a side facing window, central heating radiator.

## Bathroom

With a panelled bath and electric shower above, wash hand basin, low flush w.c, side facing window, central heating radiator, tiling to splashbacks.

## Outside

### Gardens

Low maintenance style front and rear gardens, the rear being enclosed with patio.

### Driveway

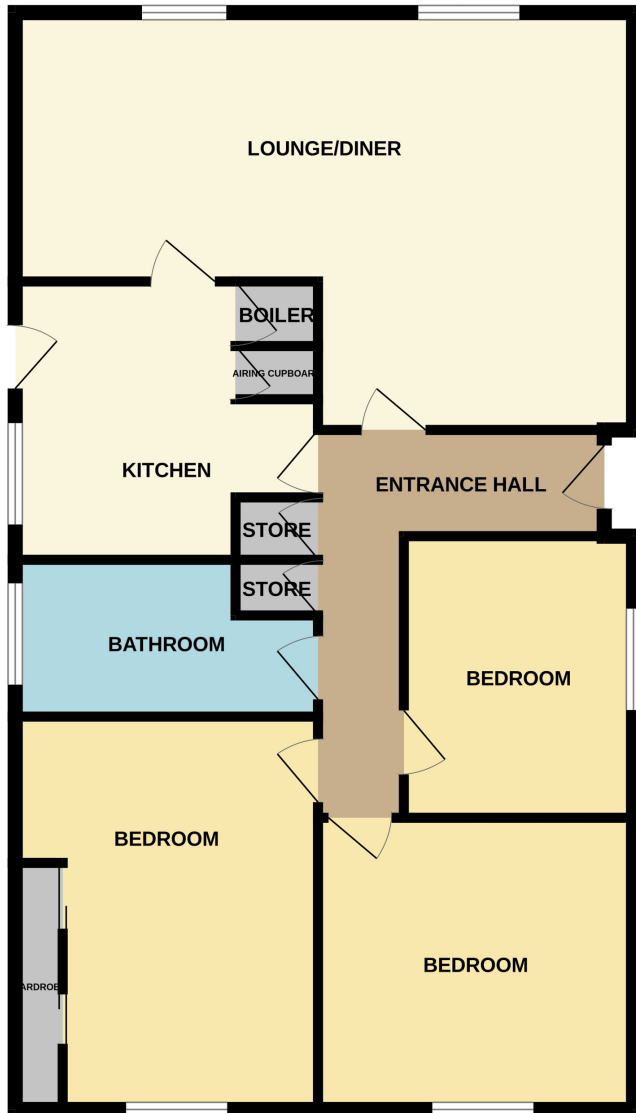
Ample parking down the side.

## Garage





GROUND FLOOR



Whilst every attempt has been made to ensure the accuracy of the floorplan contained here, measurements of doors, windows, rooms and any other items are approximate and no responsibility is taken for any error, omission or mis-statement. This plan is for illustrative purposes only and should be used as such by any prospective purchaser. The services, systems and appliances shown have not been tested and no guarantee as to their operability or efficiency can be given.  
Made with Metropix ©2024