

# BARTESTREE

£290,000

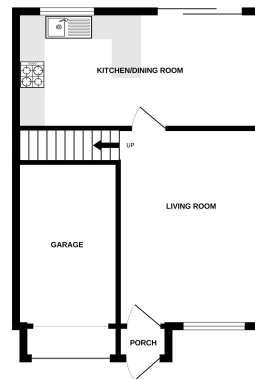


## Key Features

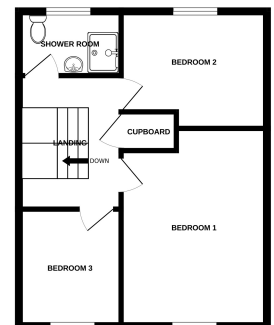
- ✓ Updated kitchen and bathroom
- ✓ Recently re-fitted boiler
- ✓ Garage and off road parking



GROUND FLOOR  
481 sq.ft. (42.8 sq.m.) approx.



1ST FLOOR  
435 sq.ft. (40.4 sq.m.) approx.



TOTAL FLOOR AREA: 916 sq.ft. (82.2 sq.m.) approx.  
Made with Merge 02024