

**4 Bedroom(s), Detached House, Freehold**

**Stoops Road, Bessacarr, Doncaster.**



- 3D Virtual Tour Available
- Newly Renovated Throughout to a High Standard
- Four Bedrooms & Two En Suites
- Garage and Driveway Allowing for Multiple Cars to Park
- Open Plan Modern and Contemporary Kitchen Diner and Living Area

- Stunning Detached Family Home
- Utility Room and Ground Floor W/C
- Family Bathroom
- Spacious Rear Enclosed Garden

**£540,000**  
**For Sale**

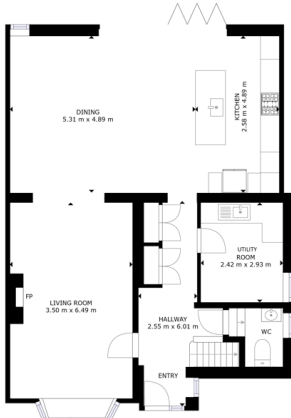
*Book your viewing today* Tel: 01302 247754

## Owner's View

Welcome to this detached family home which has been renovated to a high standard and ready to move straight into. The property comprises of a spacious entrance hall in which to welcome family and friends in this impressive property, whilst doors open to the lounge and open plan kitchen diner and entertaining area with bifolding doors opening onto a patio area and rear garden. There is a useful utility room and ground floor toilet, whilst the first floor has 4 double bedrooms, two with en-suites. Stoops Road is a popular road with the Bessacarr Community, just across the road is Haslam Park which has a generous sized field for children and dogs to enjoy, there is also tennis courts and a bowling green. Bessacarr Tennis Club is also a short stroll away. The schools are exceptional, both primary and secondary, and the walks from here are great for all ages.

## Ground Floor

### Floor Plan



Matterport

### Entrance Hallway



### Open Plan Kitchen Diner



### Lounge





Utility Room



Ground Floor W/C



First Floor

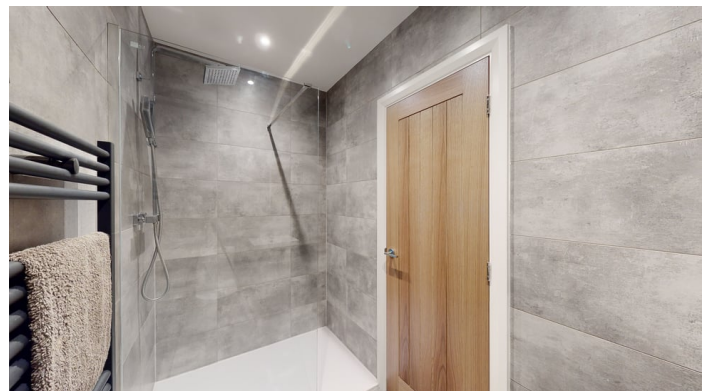
Floor Plan



Master Bedroom



En Suite



## Second Bedroom



## Fourth Bedroom



## En Suite



## Family Bathroom



## Third Bedroom



## External

## Front Aspect



## Rear Garden



Approximate Water Heating Installation Date -

Boiler Location -

Approximate Electrical System Installation Date -

Permanent Loft Ladder -

Loft Insulation -

Loft Boarded out -

Whilst every effort is made to ensure that the information contained in these particulars is reliable, they do not constitute or form part of an offer or any contract. The Property Hive accept no liability for the accuracy of the contents, and therefore they should be independently verified by prospective buyers or tenants before agreeing an offer. All measurements provided are approximate and should be verified before exchange of contracts. No appliances, fixtures or fittings have been tested and should be checked by the buyer before exchange of contracts to ensure they are in good working order.

## Property Information

Council Tax Band - C

Utilities - Mains Gas, Mains Electricity, Mains Water

Water Meter -

Tenure -

Solar Panels -


Space Heating System -

Approximate Heating System Installation Date -

Water Heating System -

All measurements provided are approximate and should be verified before exchange of contracts. No appliances have been tested and should be checked to ensure they are in good working order.

## Energy Performance Certificate

| Energy Efficiency Rating                           |                            |   |
|--|----------------------------|---|
|  | Current                    | Potential   |
| <i>Very energy efficient - lower running costs</i> |                            |   |
| (92-100) <b>A</b>                                  |                            |   |
| (81-91) <b>B</b>                                   |                            | 82  |
| (69-80) <b>C</b>                                   | 74                         |   |
| (55-68) <b>D</b>                                   |                            |   |
| (39-54) <b>E</b>                                   |                            |   |
| (21-38) <b>F</b>                                   |                            |   |
| (1-20) <b>G</b>                                    |                            |   |
| <i>Not energy efficient - higher running costs</i> |                            |   |
| <b>England, Scotland &amp; Wales</b>               | EU Directive<br>2002/91/EC |  |