



Mansfield Road

Baldock,
Hertfordshire, SG7 6ED
Offers in Excess of £400,000

country
properties

This well-presented three-bedroom end-of-terrace home is ideally located on Mansfield Road, right in the heart of Baldock, and benefits from wrap-around front and rear gardens along with private parking on the driveway at the front of the property. Light, airy, and spacious throughout, this centrally located property offers an excellent blend of character, practicality, and convenience, all within walking distance of local amenities.

The accommodation consists of a welcoming entrance hall providing access to the first floor and leading through to the main living areas. The lounge is bright and comfortable, featuring a front-facing window and an electric feature fire, making it an ideal space to relax. To the rear, the modern kitchen is well laid out with a range of wall and base units, ample work surface space, an inset sink, integrated dishwasher, integrated cooker, with ample space for dining, creating a sociable and functional hub of the home.

From the kitchen, there is access to a ground-floor cloakroom adding further convenience and includes a WC and wash hand basin.

Upstairs, the landing is naturally lit via a side window and provides access to the loft. The principal bedroom is a good-sized double with built-in wardrobes and a window to the rear aspect. The second bedroom overlooks the front garden, while the third bedroom, also front-facing, is ideal as a child's room, guest bedroom, or home office. The family bathroom is fitted with a corner bath with shower over, WC, wash hand basin, and a useful storage cupboard housing the boiler.

Externally, the property offers an enclosed side and rear garden as well as a front garden and driveway with parking for up to 2 cars. The rear garden enjoys a south facing aspect and features a patio area for entertaining with the remainder laid to lawn.

Location

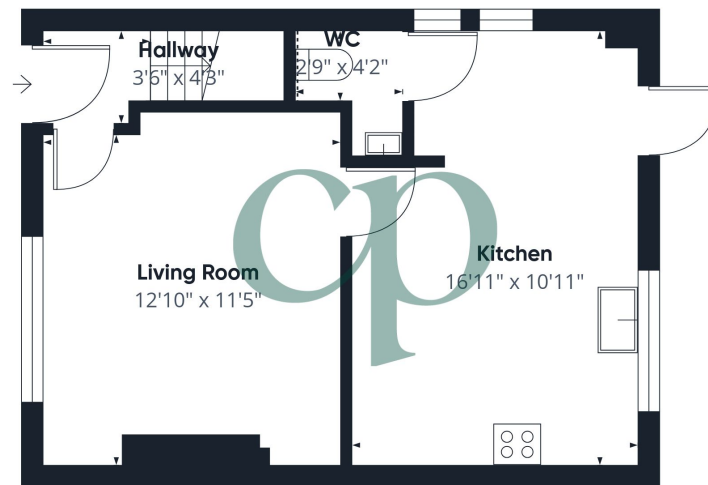
Baldock is a historic and highly regarded market town in Hertfordshire, offering a mainline railway station with direct links to London and Cambridge. The town centre provides a wide range of amenities including shops, cafés, restaurants, and public houses, while excellent road links via the A1, A505, and A10 make it a popular choice for commuters. The property is also within easy walking distance of the well-regarded Knights Templar Secondary School, further enhancing its appeal. An internal viewing is highly recommended to fully appreciate the space, presentation, and superb location this home has to offer.

- Well presented through out
- 3 Bedroom End of Terrace Family Home
- Off road parking
- 1 Family bathroom & 1 Downstairs WC
- Council tax - Band C & EPC Rating D
- Walking distance to all local amenities and the station

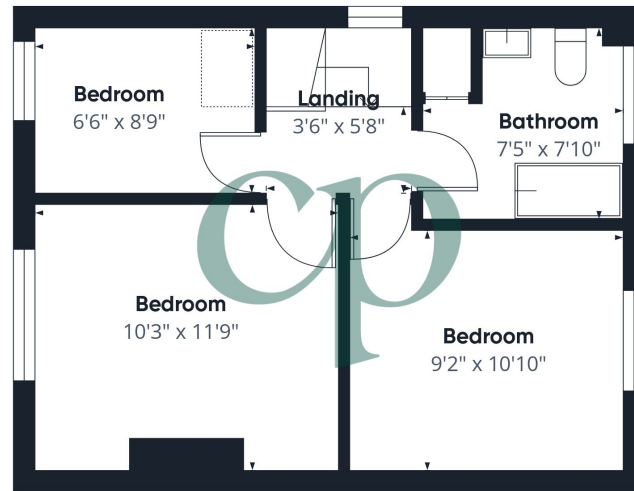








Floor 0



Floor 1



Approximate total area⁽¹⁾
717 ft²

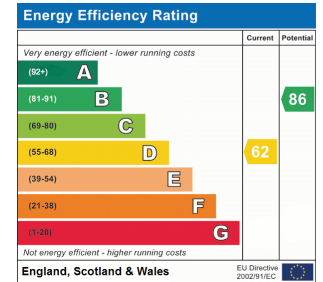
Reduced headroom
1 ft²

(1) Excluding balconies and terraces

Reduced headroom
..... Below 5 ft

Calculations reference the RICS IPMS 3C standard. Measurements are approximate and not to scale. This floor plan is intended for illustration only.

GIRAFFE360



All measurements are approximate and quoted in metric with imperial equivalents and for general guidance only and whilst every attempt has been made to ensure accuracy, they must not be relied on. The fixtures, fittings and appliances referred to have not been tested and therefore no guarantee can be given and that they are in working order. Internal photographs are reproduced for general information and it must not be inferred that any item shown is included with the property. For a free valuation, contact the numbers listed on the brochure

Viewing by appointment only

Country Properties | 39, High Street | SG7 6BG

T: 01462 895061 | E: baldock@country-properties.co.uk

www.country-properties.co.uk

country
properties

country
properties