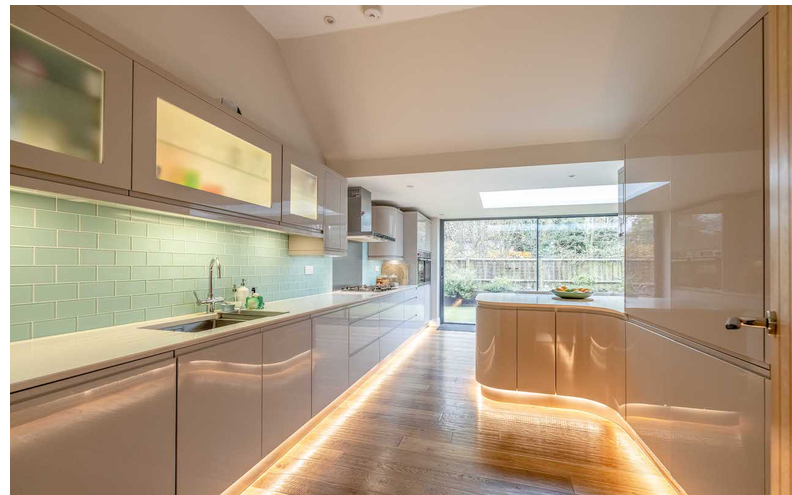


FOR SALE



## Britwell Road, Burnham, Buckinghamshire



FIVE DOUBLE BEDROOMS



HUGE DOUBLE GARAGE WITH POWER & PLUMBING + ALLOCATED PARKING



0.8 MILES TO BURNHAM TRAIN STATION (ELIZABETH LINE)



IMMACULATE CONDITION THROUGHOUT



LOW MAINTENANCE PRIVATE REAR GARDEN



PRIVATE GATED DEVELOPMENT



STUNNING GRADE II LISTED BARN CONVERSION



0.2 MILES TO BURNHAM GRAMMAR SCHOOL



LARGE OPEN PLAN KITCHEN/DINING & LIVING AREA WITH UNDERFLOOR HEATING



THREE BATHROOMS



BEAUTIFUL CHARACTER FEATURES THROUGHOUT

FOR SALE £800,000 Freehold

