



Crest Court

Crest Court, Flat 18 The Crest, London, London, Greater  
London (Barnet). NW4 2HL

£359,999  
Leasehold

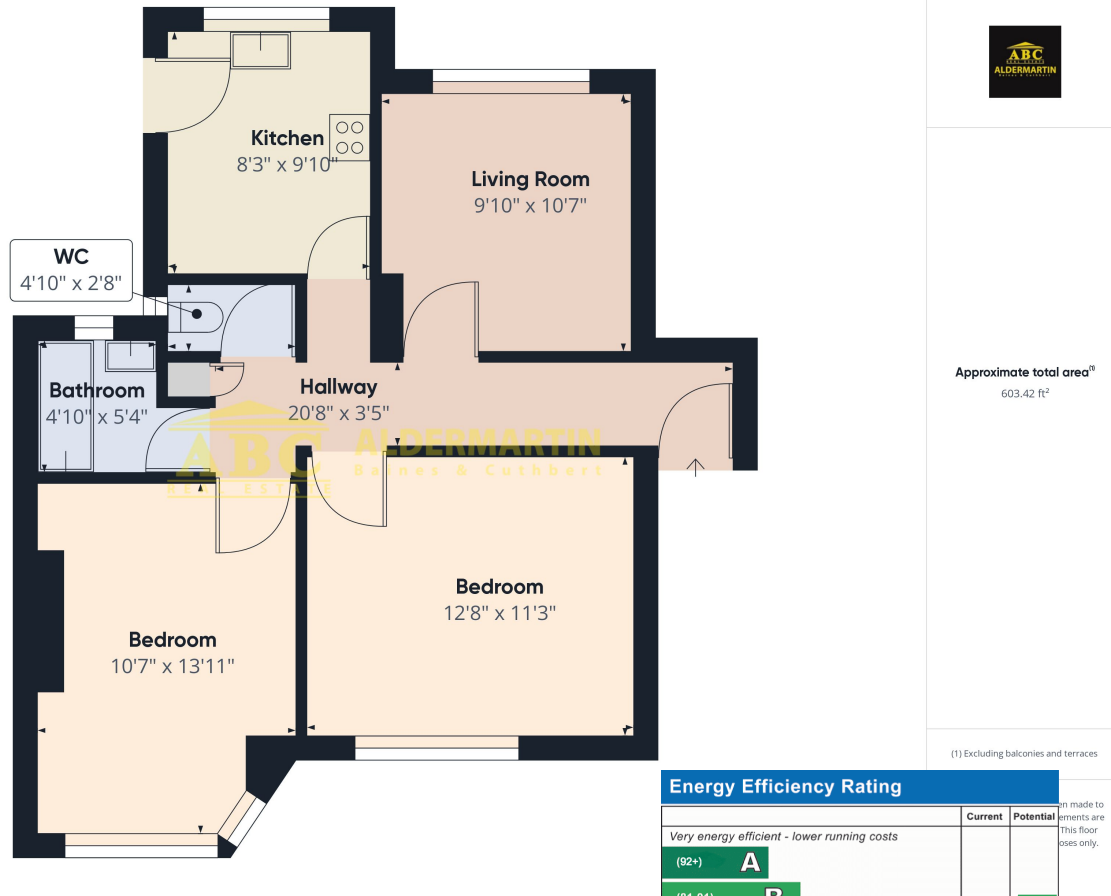


- 2 DOUBLE BEDROOMS
- COUNCIL TAX BAND D
- GROUND RENT/SERVICE CHARGES - £2,077

- PURPOSE BUILT BLOCK
- EPC RATING "C"

- GOOD TRANSPORT LINKS
- LEASE 145 YEARS

ABC Estates are pleased offer this second floor 2 bedroom purpose built flat. The property comprises a good size reception room, kitchen and family bathroom with separate WC. Close to all local amenities on Brent Street and served well by various modes of transport. This is an excellent investment opportunity for a first time buyer or Investor.



Energy Efficiency Rating		Current	Potential
Very energy efficient - lower running costs			
(92+)	<b>A</b>		
(81-91)	<b>B</b>		
(69-80)	<b>C</b>	76	82
(55-68)	<b>D</b>		
(39-54)	<b>E</b>		
(21-38)	<b>F</b>		
(1-20)	<b>G</b>		
Not energy efficient - higher running costs			
England, Scotland & Wales		EU Directive 2002/91/EC	

Assessment made to elements are this floor spaces only.

**Hendon**  
**02082 034 567**  
**info@abcestates.co.uk**

