

FOR SALE

Southfield Road,
Bedford Park borders, W4

Maisonette
Bedford Park borders

£950,000 sh of fh

4  2  1 



**horton
andgarton**

SALES / LETTINGS / PROPERTY MANAGEMENT

hortonandgarton.co.uk | Sales 020 3989 6464 | Lettings 020 3989 5454
161 Chiswick High Road, London, W4 2DT



FOR SALE

Southfield Road,
Bedford Park borders, W4

Maisonette
Bedford Park borders

£950,000 sh of fh

4  2  1 



**horton
and garton**

SALES / LETTINGS / PROPERTY MANAGEMENT

hortonandgarton.co.uk | Sales 020 3989 6464 | Lettings 020 3989 5454
161 Chiswick High Road, London, W4 2DT



FOR SALE

Southfield Road,
Bedford Park borders, W4

Maisonette
Bedford Park borders

£950,000 sh of fh

4  2  1 

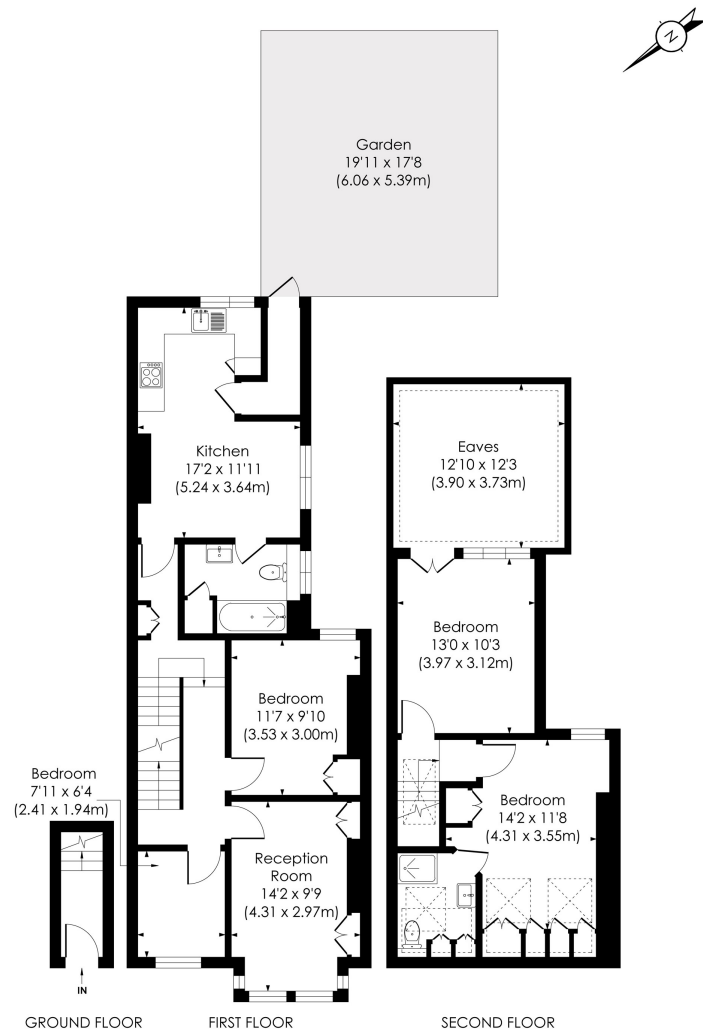


**horton
andgarton**

SALES / LETTINGS / PROPERTY MANAGEMENT

hortonandgarton.co.uk | Sales 020 3989 6464 | Lettings 020 3989 5454
161 Chiswick High Road, London, W4 2DT





SOUTHFIELD ROAD, W4

Approx. Gross Internal Floor Area
1275 Sq' / 118.45 SqM (Including RHH)
1070 Sq' / 99.38 SqM (Excluding RHH)

**horton
andgarton**

© Pixangle Property Marketing Ltd. info@pixangle.com Tel: 0208 870 2118

This floor plan has been prepared for the purpose of illustration only in accordance with the latest RICS code of measuring practice and is not to scale. All measurements and areas are approximate and whilst every effort has been made to ensure the accuracy of the plan contained here, no responsibility is taken for any error, omission or misstatement.



Edwardian split level maisonette | Three bedrooms -
 One bathroom | 1070 Sq' - 99.38 SqM | South-facing
 garden | EPC rating C | Bedford Park borders



hortonandgarton.co.uk
 Sales 020 3989 6464
 Lettings 020 3989 5454

161 Chiswick High Road, London, W4 2DT