







# Key Features

 2 Bedrooms

 1 Public

 1 Bathroom

- A traditional, two bedroom, first floor flat within a fantastic location close to Dunfermline city centre and all its amenities
- Conveniently located for Dunfermline's city centre, offering a range of amenities including shops, supermarkets, restaurants and bars that can all be reached on foot. Leisure facilities available within walking distance and fantastic outdoor spaces within Pittencrieff Park, gifted to the city by famous philanthropist Andrew Carnegie
- Transport links via nearby Dunfermline Train and Bus Stations with further links available at Halbeath and Inverkeithing Park and Ride, as well as the M90 motorway circa 2 miles from the property connecting throughout central Scotland
- Living room and galley style kitchen comes with a range of floor and wall mounted storage and white goods. Hallway comes with two separate storage cupboards
- Family bathroom with three piece suite
- Double bedroom and second single bedroom
- Communal drying green to the rear and ample on street parking available on Victoria Terrace







# Location

Nestled in the heart of Fife, Dunfermline seamlessly blends rich history with modern living, making it an ideal place to call home. As Scotland's ancient capital, it offers a wealth of cultural landmarks, including the stunning Dunfermline Abbey and Pittencrieff Park—perfect for leisurely strolls and family outings.

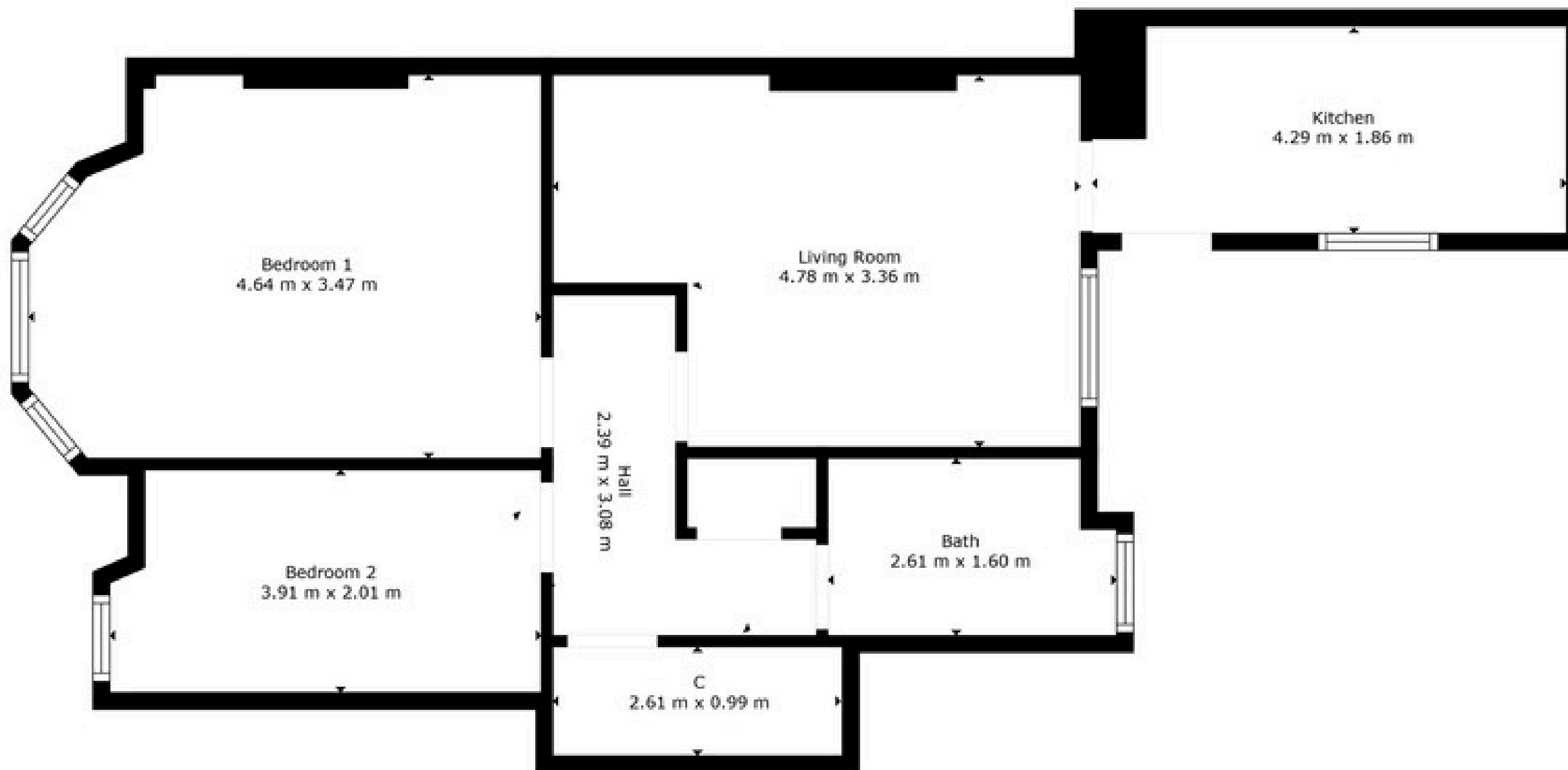
The city boasts excellent amenities, from a variety of high-street shops and independent boutiques to top-rated schools and a variety of leisure facilities. A wide range of restaurants, cafés, and traditional pubs, catering to every taste.

Dunfermline is exceptionally well-connected, with frequent rail services to Edinburgh (just 30 minutes away) and easy access to the M90, ensuring swift travel to Glasgow, Perth, and beyond. For international travel, Edinburgh Airport is a short drive away with Park and Ride facilities at Halbeath and Inverkeithing.

Whether you're looking for a bustling community, excellent transport links, or green spaces, Dunfermline offers a quality of life that's hard to beat.







Floor Plan Created By Cubicasa App. Measurements Deemed Highly Reliable But Not Guaranteed.



## Enquiries

 01383 629720

 [info@maloco.co.uk](mailto:info@maloco.co.uk)

 [maloco.co.uk](http://maloco.co.uk)



Floorplans are for illustrative purposes only. Measurements are deemed highly reliable but not guaranteed.