

TO LET

Southfield Road,
Bedford Park Borders, W4

Semi-Detached House
Bedford Park Borders

£1,500 p/w

4  3  2 

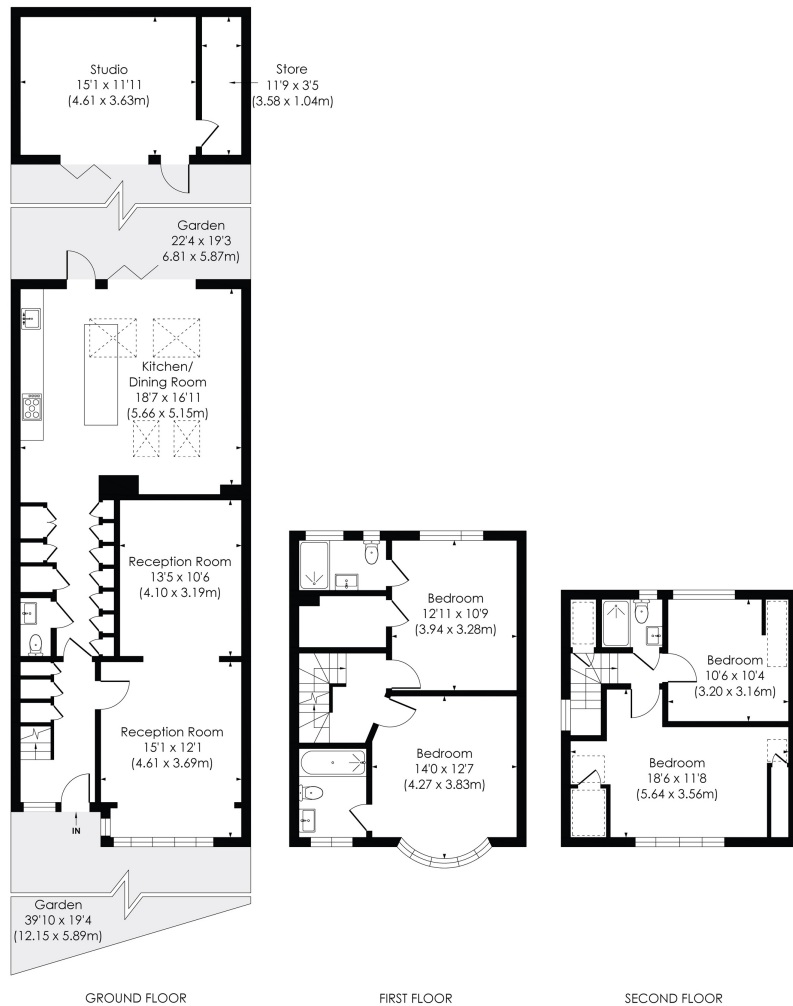


**horton
andgarton**

SALES / LETTINGS / PROPERTY MANAGEMENT

hortonandgarton.co.uk | Sales 020 3989 6464 | Lettings 020 3989 5454
161 Chiswick High Road, London, W4 2DT





SOUTHFIELD ROAD, W4

Approx. Gross Internal Floor Area
1972 Sq'/183.16 SqM (Including Reduced Height and Outbuilding)
1698 Sq'/157.71 SqM (Excluding Reduced Height and Outbuilding)
 Outbuilding: **227 Sq'/21.05 SqM**

© Pixangle Property Marketing Ltd. info@pixangle.com Tel: 0208 870 2118

**horton
andgarton**

This floor plan has been prepared for the purpose of illustration only in accordance with the latest RICS code of measuring practice and is not to scale. All measurements and areas are approximate and whilst every effort has been made to ensure the accuracy of the plan contained here, no responsibility is taken for any error, omission or misstatement.



Four bedroom semi-detached house | Garden
 studio/Home office | Fantastic condition throughout |
 Private driveway | EPC TBC | Bedford Park borders



hortonandgarton.co.uk
 Sales 020 3989 6464
 Lettings 020 3989 5454

161 Chiswick High Road, London, W4 2DT