



Flat 1, 17 Cantelupe Road, Bexhill On Sea,
East Sussex, TN40 1JG

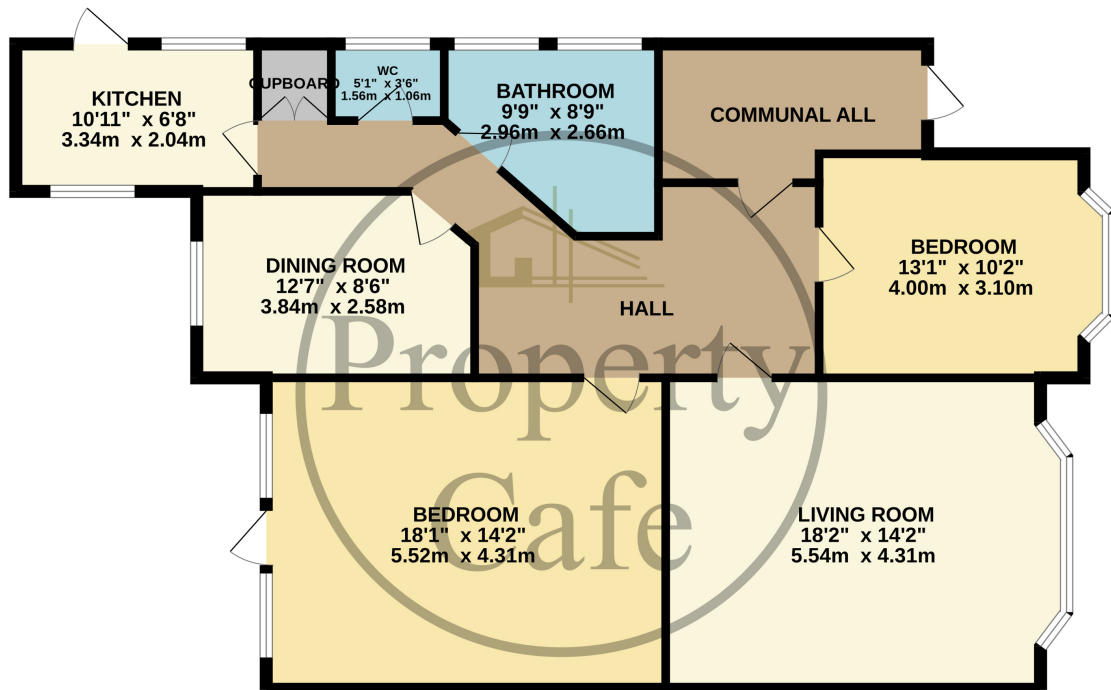
£300,000



- Guide Price (£300,000-£325,000)
- Three Bed Hall Floor Apartment
- Spacious South Facing Lounge-Diner
- Beautifully Presented Decor Throughout
- Modern Fitted Kitchen
- Modern Fitted Bathroom
- Immaculate Inner Hallway
- Separate WC
- Long Lease & Low Outgoings
- Lovely Period Charm & Features
- Raised Deck Patio Area
- Lovely Private Rear Garden
- Sought After Town Centre Location
- Internal Viewing Highly Recommended



GROUND FLOOR
1142 sq.ft. (106.1 sq.m.) approx.



TOTAL FLOOR AREA : 1142 sq.ft. (106.1 sq.m.) approx.

Whilst every attempt has been made to ensure the accuracy of the floorplan contained here, measurements of doors, windows, rooms and any other items are approximate and no responsibility is taken for any error, omission or mis-statement. This plan is for illustrative purposes only and should be used as such by any prospective purchaser. The services, systems and appliances shown have not been tested and no guarantee as to their operability or efficiency can be given.
Made with Metrofix ©2024

